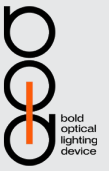


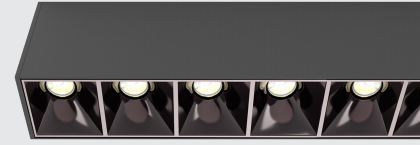
# BILLET SYMMETRICAL BAFFLES DEEP

Surface Mounted



## Key Features:

- Narrow / medium / wide + elliptical.
- Very low glare.
- High beam control.
- 1575 lm/m to 6037 lm/m.



## Technical Data:

<b>Body Material</b>	Extruded Aluminum	<b>Delivered Lumen Range</b>	1575 lm/m to 6037 lm/m
<b>Safety</b>	Chicago Plenum	<b>Dimensions</b>	Refer to Dimensions Table
<b>Warranty</b>	5 Years	<b>Driver</b>	Integral / Constant Current
<b>Light Source</b>	High Power LEDs	<b>Code Compliance</b>	CCEA / CSA / CE / ETL
<b>Lifetime</b>	L80/B10 @ 70,000 hours	<b>CRI</b>	90+
<b>Power Range</b>	16W/m to 66W/m	<b>CCT</b>	2700K / 3000K / 3500K / 4000K

## Code:

Code Example: BIDS12WL2BWE9270

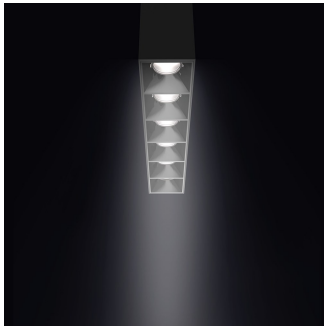
BID											
Type	Mounting	Length	Body Finish	Power	Voltage	Control	Baffles Finish	Optics Type	CRI	CCT	Emergency
<b>BID</b>	<b>S</b> Surface Mounted	<b>36</b> 900 mm <b>48</b> 1200 mm <b>60</b> 1500 mm	<b>W</b> White <b>B</b> Black	<b>Mono:</b> <b>L</b> 16 W - 1804 lm/m <b>M</b> 33 W - 3117 lm/m <b>H</b> 49 W - 4364 lm/m <b>V</b> 66 W - 5643 lm/m	<b>1</b> 120V <b>2</b> 240-220V <b>U</b> Universal 120 to 277V	<b>A</b> Non-Dim <b>B</b> 0-10 to 1% <b>D</b> DALI to 1% <b>E</b> ELV	<b>W</b> Flat White <b>B</b> Flat Black	<b>S</b> 10° <b>N</b> 20° <b>F</b> 50°	<b>9</b> 90+	<b>27</b> 2700K <b>30</b> 3000K <b>35</b> 3500K <b>40</b> 4000K	<b>N</b> No <b>9</b> 90 mins
				<b>Dim to Warm:</b> <b>D</b> 30 W - 1706 lm/m <b>W</b> 59 W - 4839 lm/m							
				<b>Tunable White:</b> <b>U</b> 33 W - 2641 lm/m <b>A</b> 66 W - 4856 lm/m							
				<b>RGBW:</b> <b>C</b> 66 W - 4068 lm/m							

### Notes:

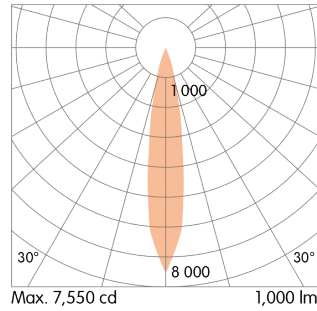
1. Static and dim to warm outputs are at 3000K.
2. Run length: it is an increment of 1ft for lengths above 5ft with the combinations of the standard lengths.
3. RGBW only available with DMX dimming.



TIGHT BEAM SYMMETRICAL BAFFLE



10° Beam Angle

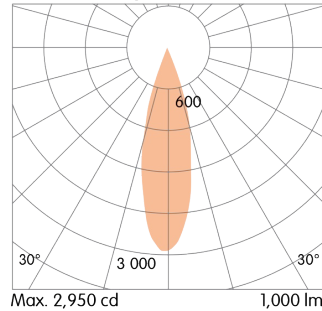


A tight 10° beam is ideal for high-ceiling applications and for emphasizing texture on vertical surfaces and architectural elements.

NARROW BEAM SYMMETRICAL BAFFLE



20° Beam Angle

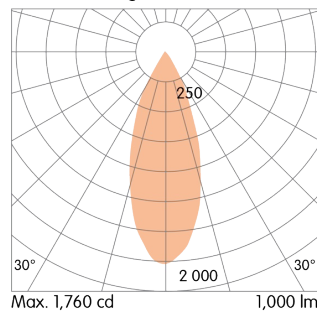


The 20° narrow beam is a versatile distribution that works in a wide range of applications and spaces. This optic is a nice balance between light punch and ambient uniformity.

FLOOD BEAM SYMMETRICAL BAFFLE



50° Beam Angle

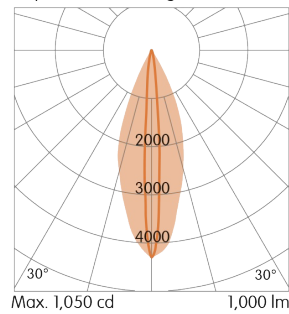


A 50° flood beam is the optimal option for achieving efficient ambient lighting with excellent uniformity and very low glare.

ELLIPTICAL DISTRIBUTION



Elliptical Beam Angle



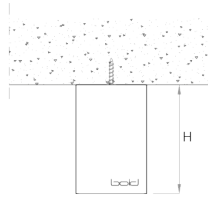
Elliptical distributions can be used anywhere focused illumination is needed. Billet's elliptical beam is ideal for applications such as grazing texture on vertical surfaces and illuminating long narrow spaces without scallops.

## Delivered Lumen Output:

Per Millimeter

Output		Watts		CRI +90			
<b>STATIC-WHITE</b>		<b>2700K</b>	<b>3000K</b>	<b>3500K</b>	<b>4000K</b>		
<b>L</b>	16W	1575 lm	1804 lm	1690 lm	1722 lm		
<b>M</b>	33W	2936 lm	3117 lm	3166 lm	3232 lm		
<b>H</b>	49W	4281 lm	4364 lm	4610 lm	4708 lm		
<b>V</b>	66W	5479 lm	5643 lm	5922 lm	6037 lm		
<b>DIM-TO-WARM 3000K-1800K</b>				<b>3000K</b>			
<b>D</b>	30W			1706 lm			
<b>W</b>	59W			4839 lm			
<b>TUNABLE WHITE 2700K-5000K</b>		<b>2700K</b>		<b>5000K</b>			
<b>U</b>	33W	2641 lm		2641 lm			
<b>A</b>	66W	4856 lm		4856 lm			
<b>RGBW</b>		<b>R</b>	<b>G</b>	<b>B</b>	<b>W</b>		
<b>Total</b>	66W	2510 lm	4068 lm	623 lm	3888 lm		

## Mounting Flexibility:



Actual (mm)  
L= 308 | 608 | 908 | 1208 | 1508 | 1808 | 2108 | 2408 |  
2708 | 3008 | Continuous runs  
W= 55  
H= 85

