



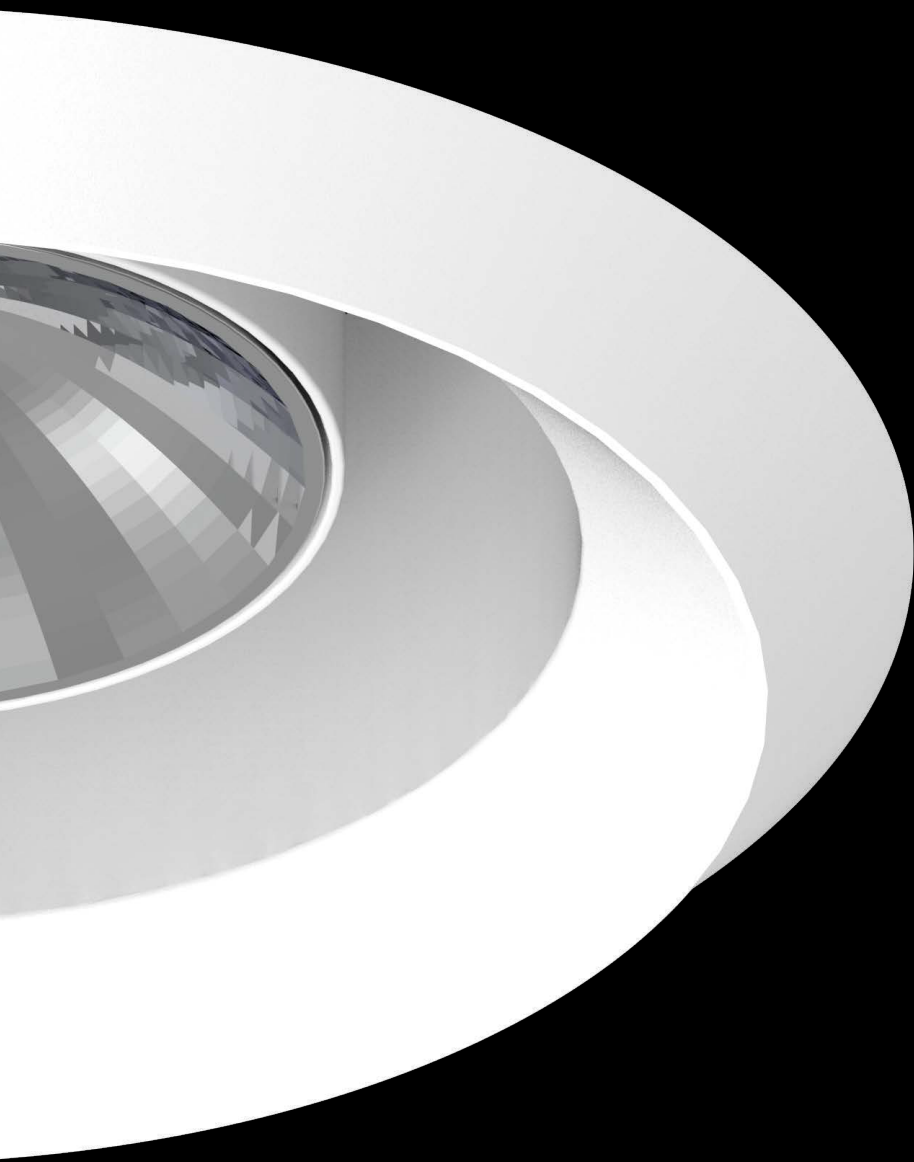
eclipse

**Visibly** Invisible

Hidden light source

bold  
lighting

quietly bold



# Moving light

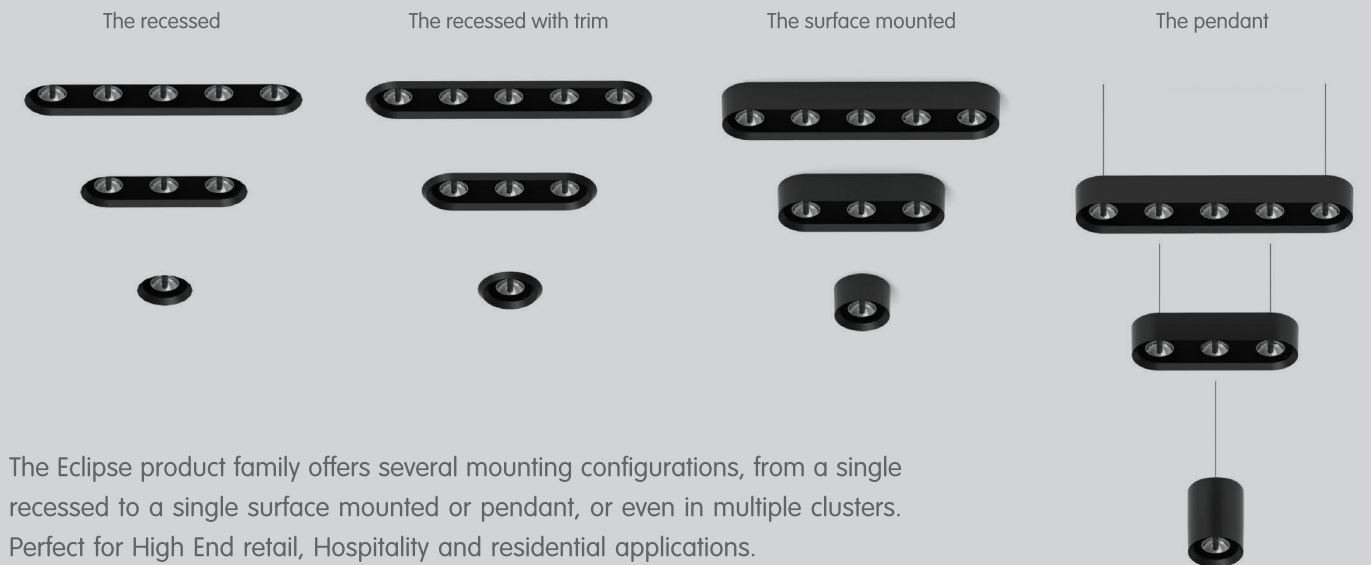
Quiet transition between horizontal & vertical illumination

Eclipse is an adjustable, indirect illumination downlight; the user is free to turn and change its light whenever and however needed thus establishing a customized dialogue with its environment.

As its name indicates a total "Eclipse", especially with its hidden source of light therefore a totally glare free optical system relying entirely on reflected light.

Its precise optics allows an outstanding beam control and a quiet transition between horizontal and vertical illumination. It is the ideal solution for applications requiring a hidden light source along with precise optics and extreme adjustability up to 45° tilt.

**The Eclipse is an original lighting system that allows comprehensive illumination alternatives, in combination with futuristic design and outstanding visual comfort.**

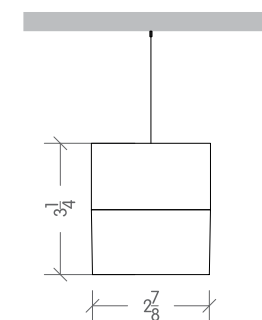


The Eclipse product family offers several mounting configurations, from a single recessed to a single surface mounted or pendant, or even in multiple clusters. Perfect for High End retail, Hospitality and residential applications.

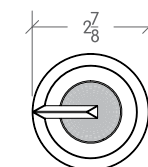


75mm

## THE PENDANT SINGLE UNIT

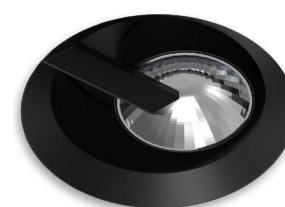


01 FRONT VIEW  
SCALE: N/A



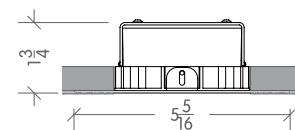
02 BOTTOM VIEW  
SCALE: N/A

- Available in single reflector or in multiple reflectors
- Individually adjustable reflectors allow a tilt up to 45° in any horizontal direction
- Recessed with trim and trimless, surface mounted or pendant
- Up to 500lm delivered luminous output for a single reflector
- Available in Dim to Warm and Tunable White
- Glare free illumination perfect for applications requiring a hidden light source
- Available in adjustable narrow to medium beam 15° to 35° and in wide beam 55°
- Multiple finishes and colors
- Easy accessible adjustment with a seamless transition between horizontal & vertical illumination

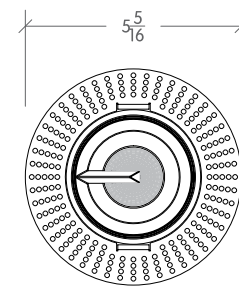


75mm

## THE RECESSED TRIMLESS SINGLE UNIT



01 FRONT VIEW  
SCALE: N/A



02 BOTTOM VIEW  
SCALE: N/A

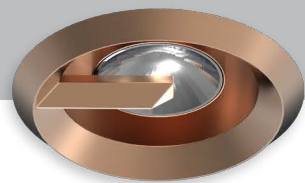
## THE FINISH PALETTE



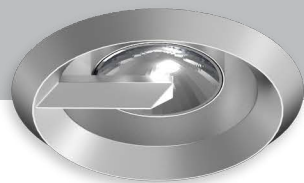
MB - Matt Black



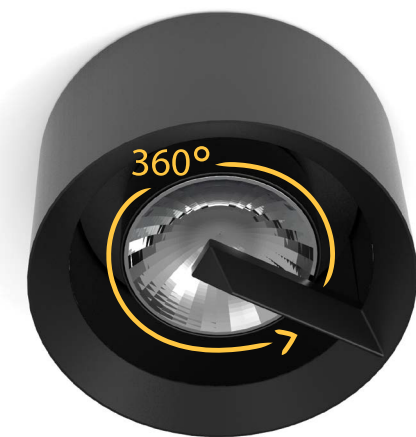
MW - Matt White



RB - Rough Bronze



RS - Rough Silver



**Design inspired by space :** The agility of the lamp is combined with a gracious silhouette.  
The hidden Source in the blade is static while the reflector travels in an omnidirectional movement to allow a maximum vertical and horizontal beam adjustability.

### CONSTRUCTION

**Product Type :** Adjustable Downlight  
**Body Material :** Die-Cast Aluminum  
**Body Finish :** Black, Grey, White or Custom RAL colors

### INSTALLATION

**Environment :** Indoor, Dry Locations  
**Mounting :** Ceiling Surface mounted, Ceiling Recessed with Trim and Trimless  
**Dimensions :** Diam. = 3", H = 3"

### LIGHT SOURCE

**Direct Light Source :** Hi-power LED  
**Luminous Output :** 600lm Delivered  
**Light Source CCT :** 2,700K / 3,000K / 4,000K / Tunable White 1,800K-4,000K / Dim to Warm 1900K-3,000K  
**Color Rendering Index :** Ra 80 and Ra90

### OPTICS

**Optics Distribution :** Narrow  
Adjustable from 10° to 30°, Wide  
Beam Adjustable from 40° to 60°, Tilt adjustment up to 45°, Rotation 360°  
**Glare Control :** UGR<5

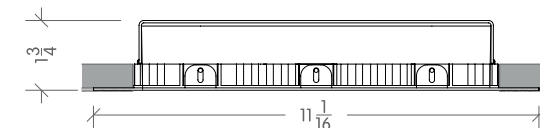
### ELECTRICAL

**Input Voltage :** 120V / Universal 120-277V - 50Hz/60Hz  
**Load :** 6W  
**Output Type :** Constant current  
**Driver type :** Remote  
**Dimming :** 0-10V / DALI / ELV / DMX

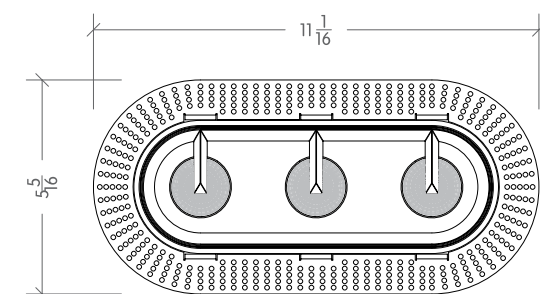
## THE RECESSED TRIMLESS MULTIPLES



### 3 reflectors



01 FRONT VIEW  
SCALE: N/A

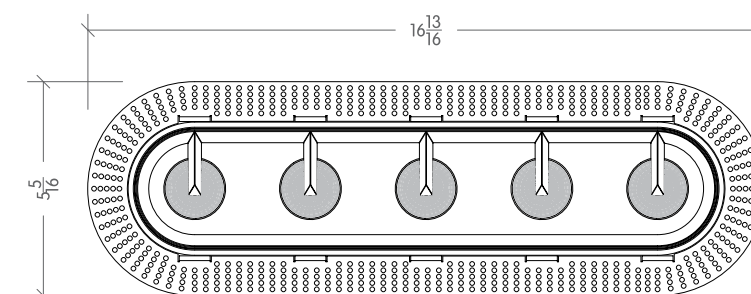


02 BOTTOM VIEW  
SCALE: N/A

### 5 reflectors

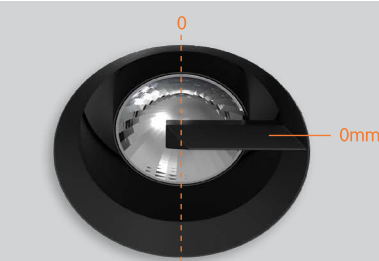


01 FRONT VIEW  
SCALE: N/A

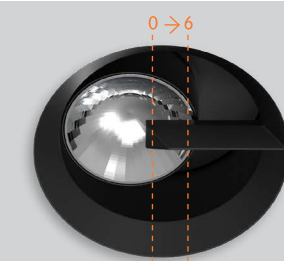


02 BOTTOM VIEW  
SCALE: N/A

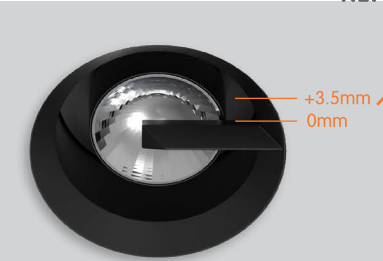
### REFLECTOR MOTION



Central position  
Central position + reflector high : 0

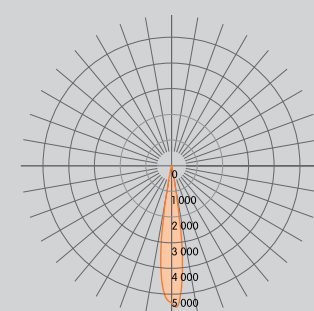


6mm horizontal translation\*

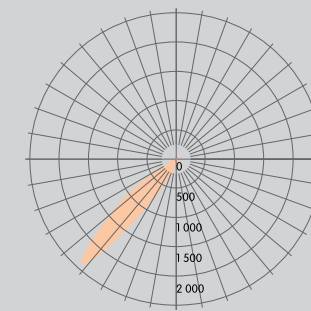


Central position  
+ reflector high : 3.5mm

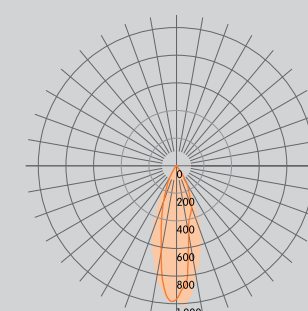
\*NB : the translation can be done from central position to any side of the outer circle



Eclipse reflector - Narrow Beam



Eclipse reflector - °45 Beam angle tilt



Eclipse reflector - Wide Beam



« Let the light follow your design intent » **Eclipse**

## Bold Lighting

Atlanta, Georgia, United States

(833)-265-3187

833-BOLD-1-US

info@boldlighting.us

[www.boldlighting.us](http://www.boldlighting.us)