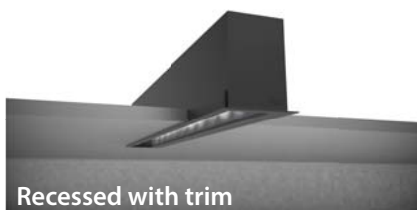
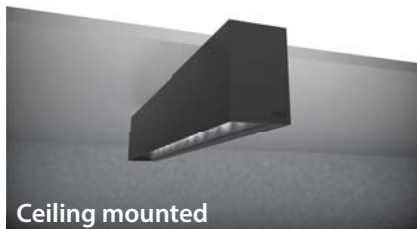


LIGHTWAY - CUT-OFF WASHER

Product Code													
Series	Environment	Mounting	Optic	Beam	CCT	Output	Control Gear	IP	Emergency	Body finish	Layout	Length	Wiring
L6	I	SM RW RT PD	WO	00	827 830 840 927 930 8WD 9TW	M1 M2 M3 D1 D2 D3	P Q R S T	40	N	BS BT WS WT GS XX	I	12 24 36 48 60 C00	I B M E



The U060 cut-off washer marks a breakthrough in wall washing illumination as it offers a flawless surface uniformity while blocking the backward and longitudinal light spill. This luminaire is glare and light pollution free! This Wallwasher is designed to be highly configurable in output and lengths, used for interior and/or exterior lighting. Its optics are designed to accommodate a flawless LED color mixing when used for tunable white or RGBW color changing.

Mounting

SM: Surface mounted
RW: Recessed with Trim
RT: Recessed Trimless
RT: Pendant Direct

Optic

WO: Cut-Off Washer

Beam

00: No Beam

CCT

8WD: 1800K - 2780K
827: 2700K, CRI +80
830: 3000K, CRI +80
835: 3500K, CRI +80
840: 4000K, CRI +80
927: 2700K, CRI +90
930: 3000K, CRI +90
9TW: 2200K - 5000K

Output (Delivered, 3,000K CRI +80)

M1: 9W/ft, 600 lm / ft.
M2: 12W/ft, 830 lm / ft.
M3: 17W/ft, 1080 lm / ft.
D1: 2x4W/ft,
D2: 2x6W/ft,
D3: 2x9W/ft,

Control gear

P: NON DIM / ECG
Q: 0 TO 10 DIM
R:* DALI
S:* 2 Wires Phase Dimming
P:* DMX

**This driver option is only available integral for fixtures 24" and longer*

IP

40: IP40

Body finish

BS: Black Smooth
BT: Black Textured
WS: White Smooth
WT: White Textured
GS: Grey Smooth
XX: Custom RAL Color

Emergency

N: No emergency

Layout

I: I shape

Length *

12: 12"
24: 23^{3/4}"
36: 35"
48: 46^{1/2}"
60: 58^{1/8}"

C00: Custom
 For custom length, please note length in Inches

**These are rounded values, please refer to installation manual for exact dimensions.*

Wiring

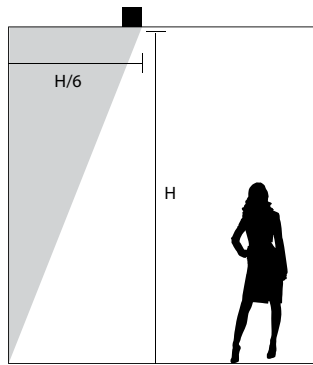
I: Individual
B: Beginning
M: Middle
E: End



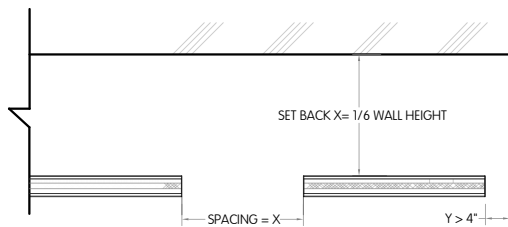
We reserve the right to make technical changes without prior notice.

LIGHTWAY - CUT-OFF WASHER

2D DIMENSIONAL DIAGRAMS

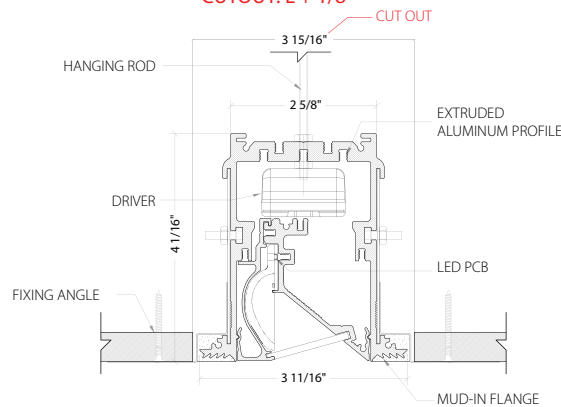


Optimal set back from wall is $H/6$ where H is the wall height. Optimal spacing between fixtures is $H/6$ as well.



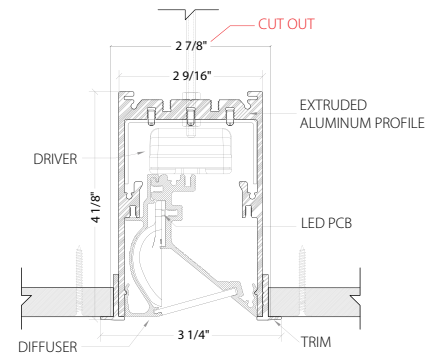
Recessed trimless

CUTOUT: $L + 1/8"$

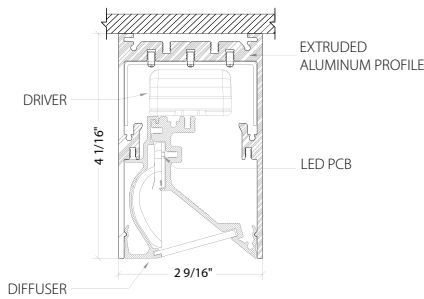


Recessed with trim

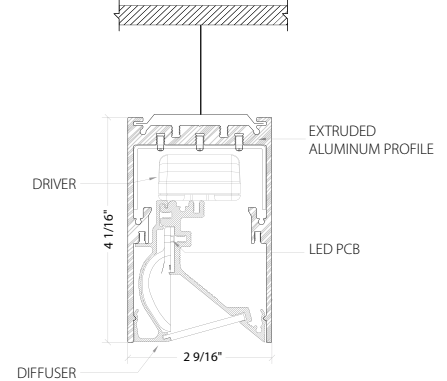
CUTOUT: $L + 1/16"$



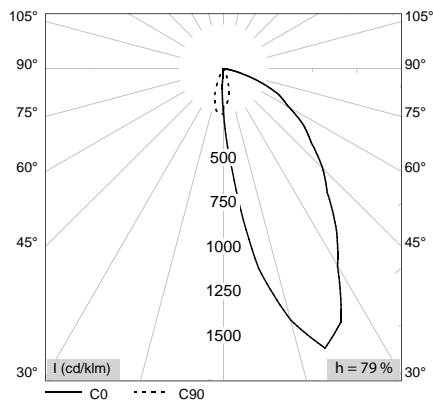
Ceiling mounted



Pendant



PHOTOMETRIC DATA



Lumen output

		CRI 80				
		2200K	2700K	3000K	4000 K	5000 K
M1	9 W/ft		564 Lm/ft	595 Lm/ft	686 Lm/ft	
M2	12 W/ft		778 Lm/ft	824 Lm/ft	961 Lm/ft	
M3	17 W/ft		1022 Lm/ft	1083 Lm/ft	1266 Lm/ft	
D1	4 W/ft	381 Lm/ft				458 Lm/ft
D2	6 W/ft	519 Lm/ft				641 Lm/ft
D3	9 W/ft	686 Lm/ft				839 Lm/ft

ELECTRICAL

120 - 277 V ; 50 - 60 Hz

NON DIM / ECG



1 To 10V DIM / DALI DIM

