

# specter

SPECTER STANDARD MODULES  
SNOOT 1 PENDANT

**bold**  
lighting



SNOOT 1 PENDANT

Our Magnetic track system, SPECTER, is a highly configurable, 2 circuits, 24VDC low voltage track system. Thanks to its magnet mounting technology, the modules are inter-changeable instantaneously. Our track is available in ceiling pendant, surface and recessed mounting for both ceiling and walls. SPECTER track is also available with an optional linear uplight feature. The snoot pendant module complements the SPECTER range with a minimalistic pendant cylinder equipped with a wide range of optics and optical accessories allowing professional lighting.

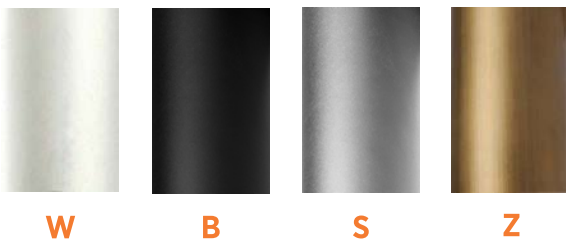
- Up to 851lm delivered output
- Various optical accessories available such as beam shaping lenses and Honeycomb louvers
- Beam options, narrow, medium, flood and wide
- Fixtures designed to mount in SPECTER track
- Available in 4 standard finishes: Black, white, silver and bronze
- Standard black baffles, custom colors are available upon request. Consult factory for adder cost and lead-times

Notes: <sup>1</sup> Available dimming 0-10V and DALI

Code example: **SPSF-P20W-B-N927-2**

Series	Length		Body Finish		Baffle Finish		Beam Angle		CRI	Color Temp		Circuit		
<b>SPSF-P</b>	20	2"	<b>W</b>	White	<b>B</b>	Black	<b>N</b>	10°	<b>9</b>	+90	<b>27</b>	2700K	<b>1</b>	1-Circuit
			<b>B</b>	Black	<b>X</b>	Custom	<b>M</b>	25°			<b>30</b>	3000K	<b>2</b>	2-Circuit
			<b>S</b>	Silver			<b>F</b>	35°			<b>35</b>	3500K		
			<b>Z</b>	Bronze			<b>H</b>	50°			<b>40</b>	4000K		
			<b>X</b>	Custom										

## STANDARD FINISHES



**W**

**B**

**S**

**Z**

## DELIVERED LUMEN OUTPUT

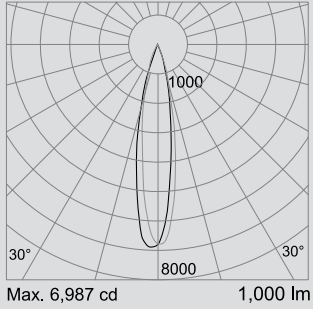
Length		Watts	CRI +90			
			2700K	3000K	3500K	4000K
2"	10W		633lm	703lm	773lm	851lm



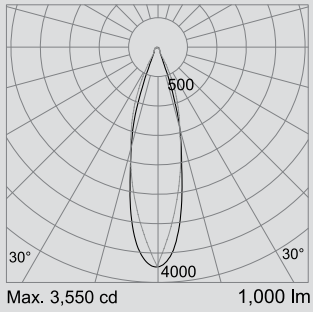
OPTICAL FLEXIBILITY

Photometric data:  
Type C Polar Curves

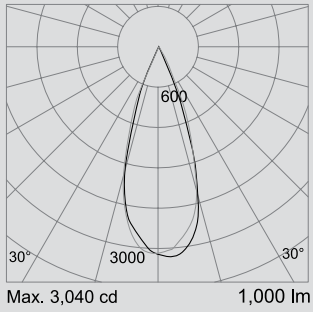
10° Beam Angle



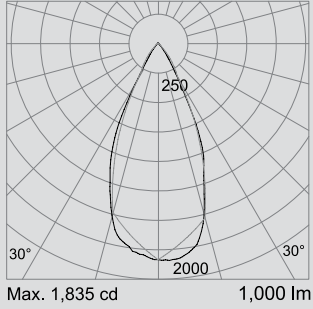
25° Beam Angle



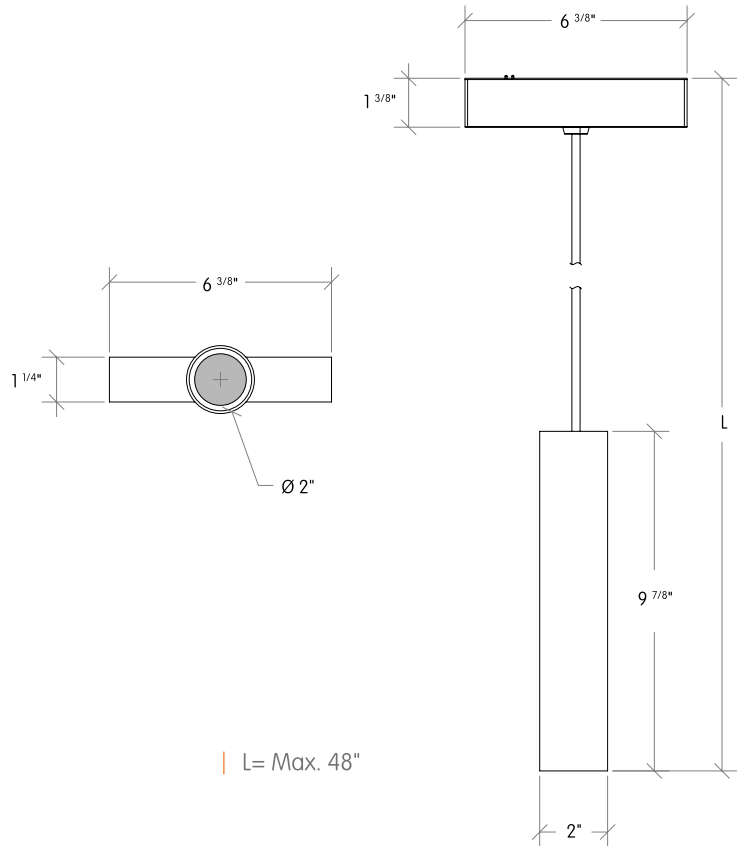
35° Beam Angle



50° Beam Angle

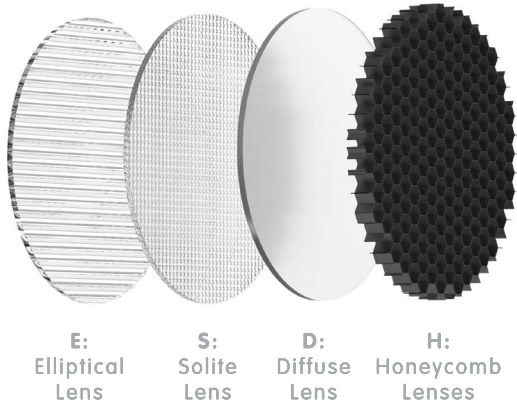


SNOOT 1 PENDANT



## OPTICAL ACCESSORIES

### Lenses and anti-glare devices



Fits model # / Size		Beam		Finish	
Snoot 0 Pendant	Diameter 2"	E	Elliptical	—	None
		S	Solite	BL	Flat Black
		D	Diffuse	SL	Silver
		H	Honeycomb	WH	White

### Beam distribution and combination

