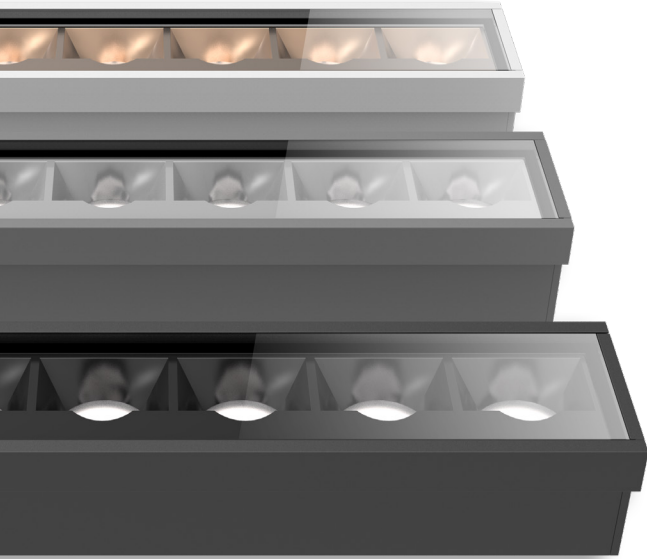


BILLET

WALLGRAZER / WALLWASHER

bold
lighting



Whether for inground, ceiling, or wall recessed applications, Billet allows you to maintain the same optical performance, light consistency, and overall aesthetics throughout the project. Our team worked tirelessly to unify the baffles design of the Wallwasher, the Wallgrazer and the general illumination products into a uniform shape that reflects the unity and harmony spirit we wanted in this product. The unique optical design of Billet, offers a high flexibility of light source colors, ranging from static white, to Dim-to-Warm, to Tunable White and even to RGBW.

CONSTRUCTION

Product Type : Billet
Body Material : Extruded Aluminum
Body Finish : Black, Grey, White or Custom RAL colors

Light Source CCT : 2,700K / 3,000K / 4,000K / Tunable White 2,700K-5,000K / Dim to Warm 1,800K-3,000K / RGBW
Color Rendering Index : Ra 80 and Ra90

INSTALLATION

Environment : Wet Locations
Mounting : Inground, Wall recessed, and Ceiling Recessed with Trim & Trimless
Dimensions : W. = 2", H. with Remote Driver = 2" | H. with built-in driver = 3-1/4"

OPTICS

Optics Distribution : Wallgraze / Wallwash
Glare Control : UGR<19

ELECTRICAL

Input Voltage : 120V / Universal 120-277V - 50Hz/60Hz
Load : 4W/ft. to 22W/ft.
Output Type : Constant current
Driver type : Built-in and Remote
Dimming : 0-10V / DALI / ELV / DMX

LIGHT SOURCE

Direct Light Source : Hi-power LEDs / Mid-Power LEDs
Luminous Output : from 500lm/ft. to 2,500lm/ft. (Delivered)

Code example: **BW-ID-S-930-M-WF-W-10-C12**



Series	Mounting	Overall Height
BW	ID Inground Integral Driver	3-1/4 in.
	IR Inground Remote Driver	3-1/4 in.
	CD Ceiling Recessed (ICA)	3-1/4 in.
	MW Millwork Recessed (ICA)	3-1/4 in.
	WR Wall Recessed Remote Driver	2 in.

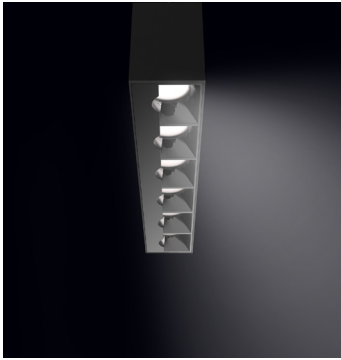
Output*	CRI	Color Temp	Beam	Baffles Finish	Body Finish	Dimming	Length
L 500lm/ft (4W)	8 +80	27 2700°K	G Wallgraze	WF Flat White	W Flat White	00 No Dimming	12 12" (30cm)
S 1,250lm/ft (9W)	9 +90	30 3000°K	W Wallwash	SB Specular Black	B Flat Black	11 0-10V to 1%	24 24" (60cm)
H 2,500lm/ft (22W)		40 4000°K		BN Black Nickel	S Silver	10 0-10V to Fade-off	36 36" (90cm)
W ¹ 2,100lm/ft (22W)		WD 3000°K-1800°K		SC Specular Chrome		EL ELV Dimming	48 48" (120cm)
T ² 1300lm/ft (2x12W)		TW 2700°K-5000°K		DC Diffuse Chrome		D1 DALI to 1%	60 60" (150cm)
				BG Bright Gold		D2 DMX	C-- Continuous Run*
				DG Diffuse Gold		LT LUTRON LDE1	*Measured in feet
						Hi-lume 1% EcoSystem Soft-on, Fade-to-Black dimming	

Notes:

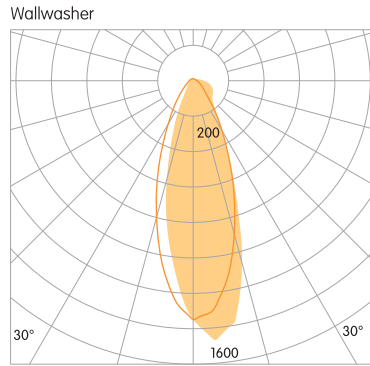
¹ Denotes output specific to Dim-to-Warm.
² Denotes output specific to Tunable White.
³ Elliptical beam also available in other angle values
 Check with Factory for Lead-times.



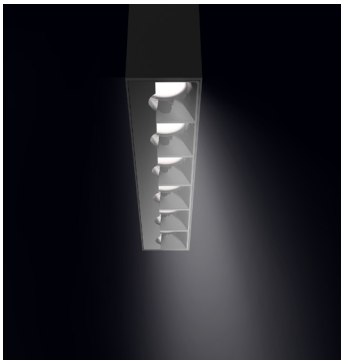
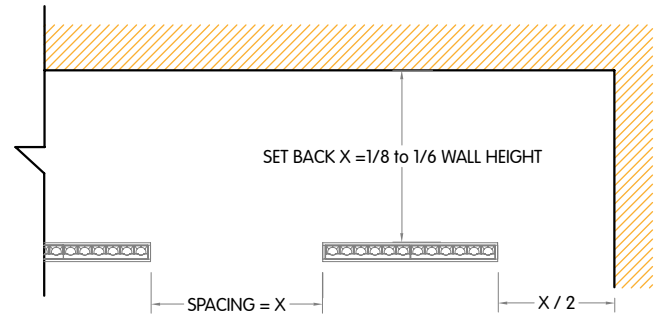
OPTICAL FLEXIBILITY



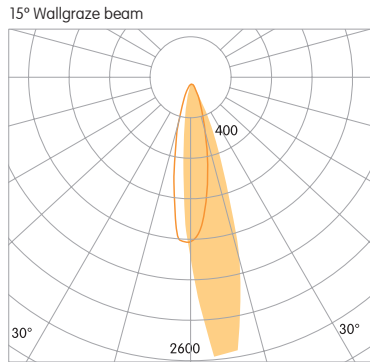
ASYMMETRICAL BAFFLES WASHER



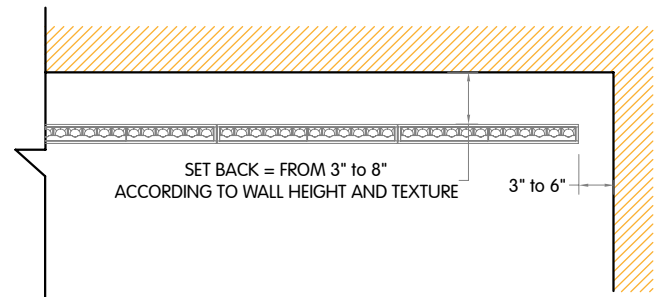
Unmatched wallwash allows even illumination of walls, with exceptional uniformity at a flexible setback 1/8 to 1/6 of the wall height. This optic is ideal for even washing large vertical surfaces.



ASYMMETRICAL BAFFLES GRAZER

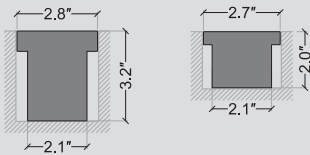


A high performance wallgrazing optic is the perfect choice for emphasizing tall and textured vertical surfaces with dramatic effects and very low glare.



MOUNTING FLEXIBILITY

INGROUND RECESSED

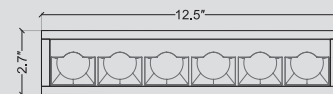


L= 12.5" | 24.3" | 36.1" | 48.0" | 60"

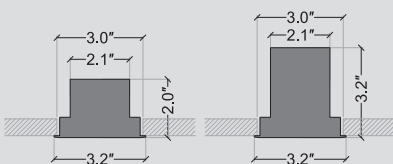
W= 2.7"

H1= 2.0" with remote driver

H2= 3.2" with Integral driver



RECESSED WITH TRIM

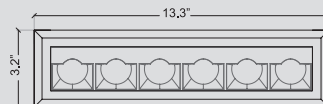


L= 13.3" | 25.1" | 36.9" | 48.8" | 60"

W= 3.2"

H1= 2.0" with remote driver

H2= 3.2" with Integral driver



Bold Lighting

Atlanta, Georgia, USA

www.boldlighting.us

e: info@boldlighting.us t: +1-833-BOLD-1-US +1-833-265-3187