

# BILLET

STEALTH REFLECTOR REMOTE - WET LOCATION

**bold**  
lighting



The Billet Stealth product is a natural expansion of the indirect performance optics range developed by Bold to enhance visual comfort. The Stealth offers an outstanding wallwash illumination with virtually zero glare. The outstanding uniformity of the wallwash effect translates in a 3:1 max. to min. illumination ratio. Its 100% indirect light optic ensures a complete shielding of its light source. This proprietary optic allows a vertical illumination starting at the Zero point of the fixture while maintaining a flush position of the optic.

Stealth offers a minimalistic aesthetic with its 25 mm continuous slot and the ability to have the flush light shield and the interior of the fixture in various finishes and colors to match any required surface. This proprietary optic promotes humancentric lighting with its glare-free attributes.

## CONSTRUCTION

**Product Type :** Linear  
**Body Material :** Extruded Aluminum  
**Body Finish :** Black / Grey / White  
 Custom RAL  
**IP Rating :** IP65 / IP67  
**IK Rating :** IK10  
**Drive Over Rating :** Billet Inground is designed to bear static loads up to 2500 lbs. from vehicles with pneumatic tires. This product is not intended to be used for traffic lanes.  
**Chicago plenum rated**

## OPTICS

**Optical Distribution :** Wallwash

## LIGHT SOURCE

**Direct Light Source :** Hi-power LEDs  
**Luminous Output :** from 1475lm/m to 3075lm/m (Delivered)  
**Light Source CCT :** 2700K / 3000K / 3500K / 4000K  
**Color Rendering Index :** Ra90  
**Lifetime :** L80 B10 @ 70,000 Hrs

## INSTALLATION

**Environment :** Wet Location  
**Mounting :** Ceiling Recessed (Trim & Trimless) / Millwork / Surface Mounted  
 Pendant / Inground  
**Dimensions :** Refer to dimension table

## ELECTRICAL

**Input Voltage :** 220-240V / UNV 120-277V - 50Hz/60Hz  
**Load :** 33W/m to 66W/m  
**Output Type :** Constant Voltage  
**Driver Type :** Remote  
**Dimming :** 0-10V / DALI / ELV / DMX / Lutron Hi-Lume  
**Code Compliance :** ETL / CSA / CE

Series	Mounting	Nominal Length <sup>1</sup>	Body Finish
<b>BOK</b>	<b>R</b> Recessed with Trim	<b>12</b> 300 mm	<b>W</b> White
	<b>T</b> Recessed Trimless*	<b>24</b> 600 mm	<b>B</b> Black
	<b>S</b> Surface Mounted	<b>36</b> 900 mm	<b>G</b> Grey
	<b>P</b> Pendant	<b>48</b> 1200 mm	<b>X</b> Custom RAL
	<b>M</b> Millwork	<b>60</b> 1500 mm	
	<b>I</b> Inground*	<b>XX</b> Custom mm	

\* For Inground "I" and Recessed Trimless "T" mountings, the housings will show on the price quote and order as a separate item to allow us to ship them ahead of the fixtures if required by the contractor.

For custom lengths and shapes, consult factory.  
 For exact lengths refer to dimensions table.

Code example: **BOK**-P12W-H11-W-W927-0

Output	Voltage	Dimming	Baffle	Beam Angle	CRI	Color Temp	Emergency
<b>M<sup>2</sup></b> 1535lm/m (33W)	<b>2</b> 220-240V	<b>H</b> Non Dim	<b>W</b> White	<b>W</b> Washer	<b>9</b> +90	<b>27</b> 2700K	<b>0</b> No
<b>H<sup>2</sup></b> 2015lm/m (49W)	<b>U<sup>3</sup></b> Universal 120 to 277V	<b>I</b> 0-10V to 1%	<b>B</b> Black			<b>30</b> 3000K	<b>9</b> 90 mins
<b>V<sup>2</sup></b> 2875lm/m (66W)		<b>K</b> Dali to 1%	<b>G</b> Grey			<b>35</b> 3500K	
		<b>L</b> ELV	<b>X</b> Custom RAL			<b>40</b> 4000K	
		<b>M</b> DMX <b>N<sup>4</sup></b> LUTRON					

Notes:

- <sup>1</sup> 150 mm length increments available as a modification.
- <sup>2</sup> Denotes output at 3000K, unless otherwise noted.
- <sup>3</sup> Not applicable for ELV dimming.
- <sup>4</sup> Hi-lume, Vive, and Athena compatible.

Consult factory for lead-times.  
 Consult factory for systems using multiple optics and mounting configurations.



**Bold Lighting**  
 4710 Ecton Dr., Marietta, GA 30066, USA  
 info@boldlighting.us www.boldlighting.us t: +1-678-903-4061

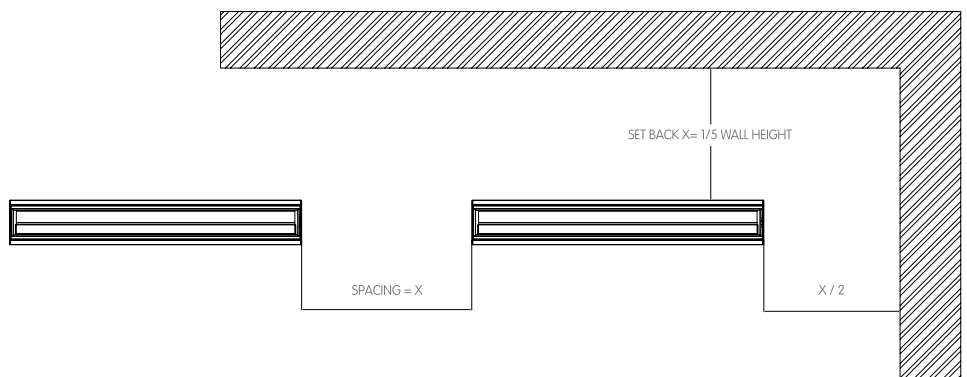
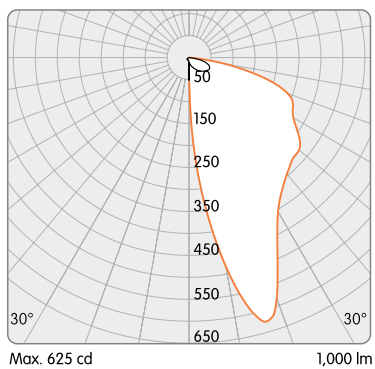
# OPTICAL FLEXIBILITY

## STEALTH WALLWASHER



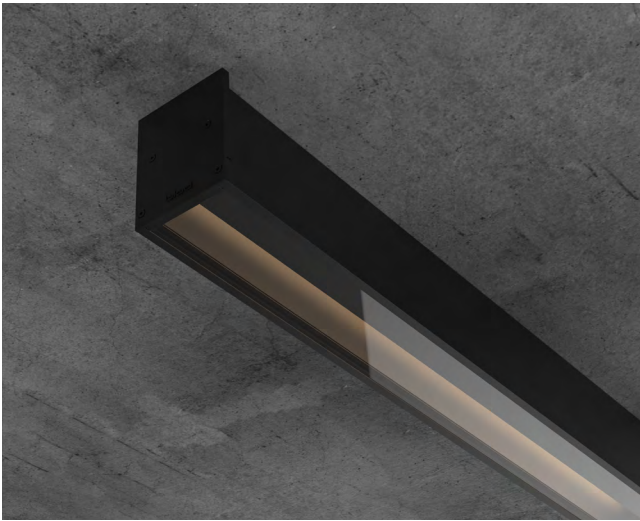
The Stealth Reflector provides even illumination of vertical surfaces with a flexible set back of 1/5 of the wall height and an offset to spacing ratio of 1:1. Stealth's optics are designed to wash large areas where exceptional uniformity and a quiet ceiling is required.

Stealth Reflector

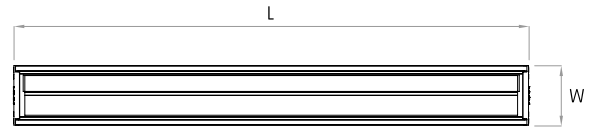
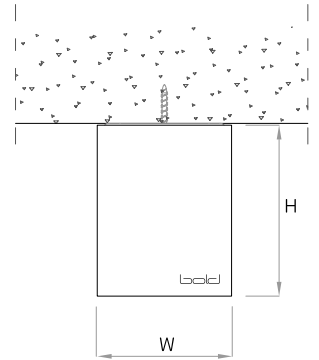


**MOUNTING FLEXIBILITY**  
Per Millimeter

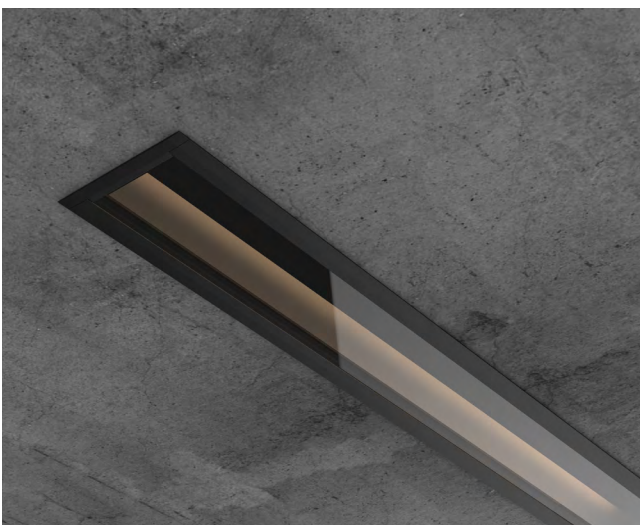
**SURFACE MOUNTED**




Actual (mm)  
L= 622 | 922 | 1222 | 1522 |  
Continuous runs  
W= 72  
H= 91

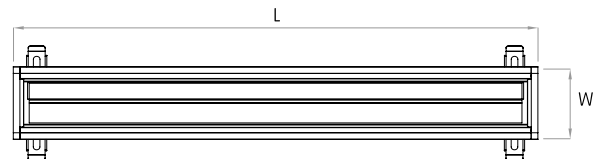
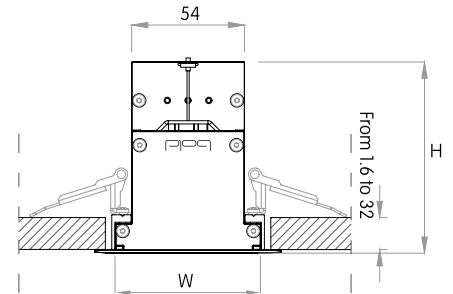


**RECESSED WITH TRIM**



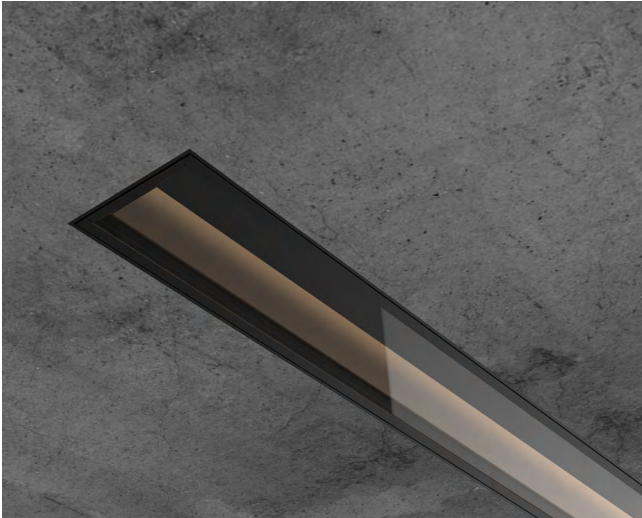
 (L-20 x W-20)


Actual (mm)  
L= 334 | 634 | 934 | 1234 |  
1534 | Continuous runs  
W= 80  
H= 91



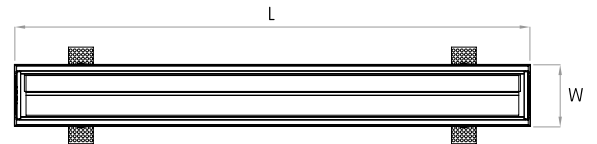
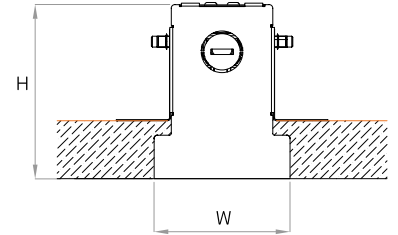
**MOUNTING FLEXIBILITY**  
Per Millimeter

**RECESSED TRIMLESS**

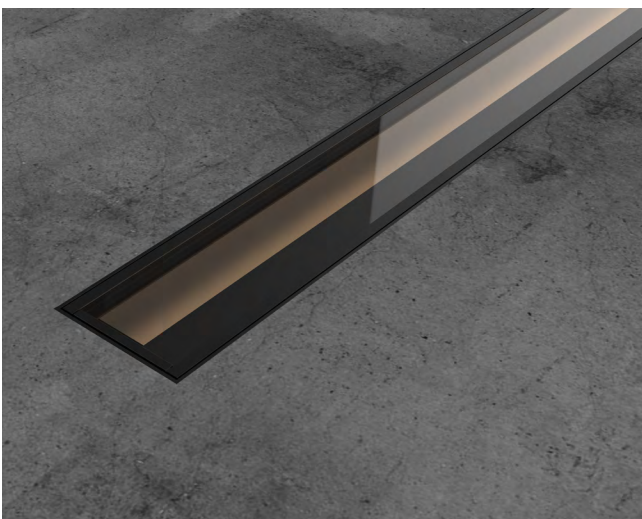


 (L+1.6 x W+1.6)

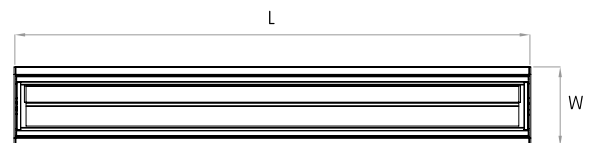
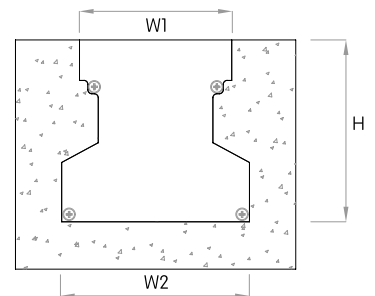
Actual (mm)  
L= 624 | 924 | 1224 | 1524 |  
Continuous runs  
W= 75  
H= 97



**INGROUND**



Actual (mm)  
L= 325 | 625 | 925 | 1225 |  
1525 | Continuous runs  
W1= 77 | W2= 95  
H= 92

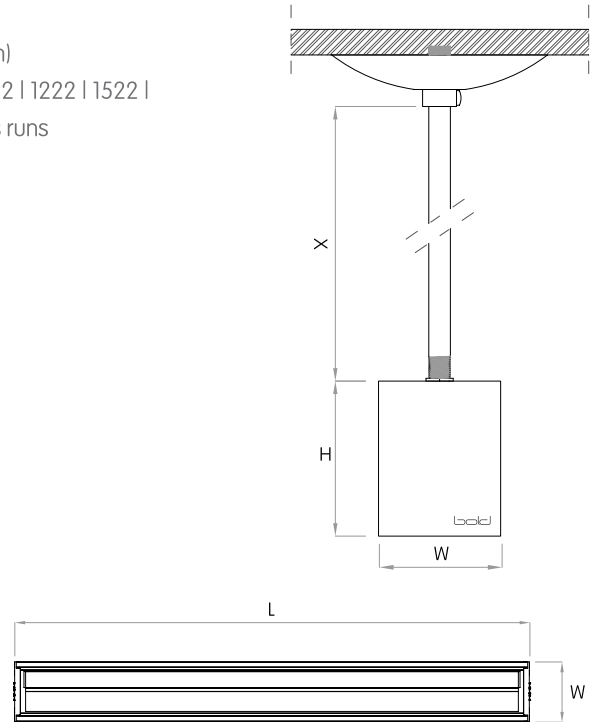


**MOUNTING FLEXIBILITY**  
Per Millimeter

**PENDANT**



Actual (mm)  
L= 622 | 922 | 1222 | 1522 |  
Continuous runs  
W= 72  
H= 91  
X= 1500



## DELIVERED LUMEN OUTPUT

Per Linear Foot

Output Watts CRI +90

STATIC-WHITE		2700K	3000K	3500K	4000K
<b>M</b>	33W	1475 lm	1535 lm	1595 lm	1645 lm
<b>H</b>	49W	1930 lm	2015 lm	2090 lm	2155 lm
<b>V</b>	66W	2755 lm	2875 lm	2980 lm	3075 lm

## DIMENSIONS TABLE

				12"		24"		36"		48"		60"		
		Height		Width		Actual Length								
		mm	inch	mm	inch	mm	inch	mm	inch	mm	inch	mm	inch	
		<b>Surface Mounted</b>	91	3 9/16	72	2 13/16			622	24 1/2	922	36 5/16	1222	48 1/8
<b>Recessed with Trim</b>	91	3 9/16	88	3 7/16	335	13 3/16	634	25	934	36 13/16	1234	48 5/8	1534	60 7/16
<b>Recessed Trimless</b>	97	3 13/16	75	2 15/16			624	24 5/8	924	36 3/8	1224	48 1/4	1524	60
<b>Pendant</b>	91	3 9/16	72	2 13/16			622	24 1/2	922	36 5/16	1222	48 1/8	1522	59 15/16
<b>Inground (with housing)</b>	92	3 5/8	95	3 3/4	325	12 13/16	625	24 5/8	925	36 7/16	1225	48 1/4	1525	60

