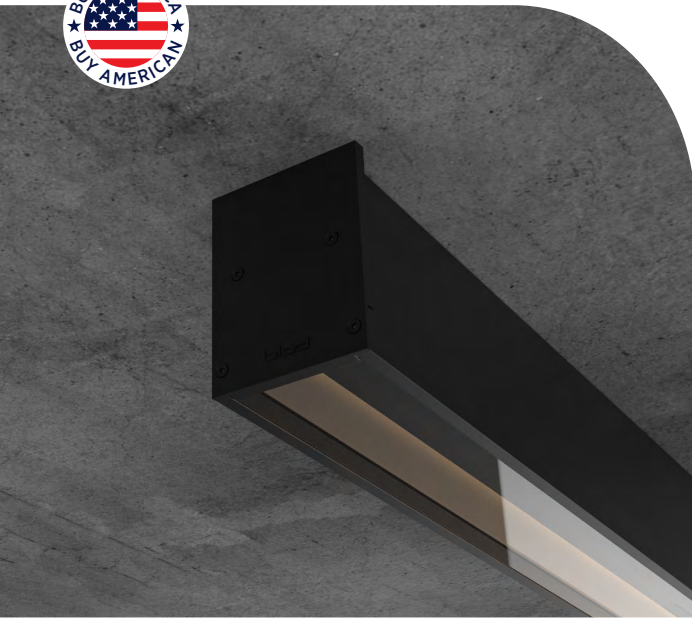


BILLET

STEALTH REFLECTOR INTEGRAL - WET LOCATION

bold
lighting



The Billet Stealth product is a natural expansion of the indirect performance optics range developed by Bold to enhance visual comfort. The Stealth offers an outstanding wallwash illumination with virtually zero glare. The outstanding uniformity of the wallwash effect translates in a 3:1 max. to min. illumination ratio. Its 100% indirect light optic ensures a complete shielding of its light source. This proprietary optic allows a vertical illumination starting at the Zero point of the fixture while maintaining a flush position of the optic.

Stealth offers a minimalistic aesthetic with its 25 mm continuous slot and the ability to have the flush light shield and the interior of the fixture in various finishes and colors to match any required surface. This proprietary optic promotes humancentric lighting with its glare-free attributes.

CONSTRUCTION

Product Type : Linear
Body Material : Extruded Aluminum
Body Finish : Black / Grey / White
Custom RAL

IP Rating : IP65 / IP67

IK Rating : IK10

Drive Over Rating : Billet Inground is designed to bear static loads up to 2500 lbs. from vehicles with pneumatic tires. This product is not intended to be used for traffic lanes.

Chicago plenum rated

INSTALLATION

Environment : Wet Location

Mounting : Ceiling Recessed (Trim & Trimless) / Millwork / Surface Mounted
Pendant / Inground

Dimensions : Refer to dimension table

OPTICS

Optical Distribution : Wallwash

LIGHT SOURCE

Direct Light Source : Hi-power LEDs
Luminous Output : from 1475lm/m to 3075lm/m (Delivered)

Light Source CCT : 2700K / 3000K
3500K / 4000K

Color Rendering Index : Ra90

Lifetime : L80 B10 @ 70,000 Hrs

ELECTRICAL

Input Voltage : 220-240V / UNV 120-277V - 50Hz/60Hz

Load : 33W/m to 66W/m

Output Type : Constant Current

Driver Type : Integral

Dimming : 0-10V / DALI / ELV / DMX / Lutron Hi-Lume

Code Compliance : ETL / CSA / CE

Series	Mounting	Nominal Length ¹	Body Finish
BOK	R Recessed with Trim	12 300 mm	W White
	T Recessed Trimless*	24 600 mm	B Black
	S Surface Mounted	36 900 mm	G Grey
	P Pendant	48 1200 mm	X Custom RAL
	M Millwork	60 1500 mm	
	I Inground*	XX Custom mm	

* For Inground "I" and Recessed Trimless "T" mountings, the housings will show on the price quote and order as a separate item to allow us to ship them ahead of the fixtures if required by the contractor.

For custom lengths and shapes, consult factory.
For exact lengths refer to dimensions table.

Code example: **BOK**-P12W-H2B-W-W927-0

Output	Voltage	Dimming	Baffle	Beam Angle	CRI	Color Temp	Emergency
M² 1535lm/m (33W)	2 220-240V	A No Dimming	W White	W Washer	9 +90	27 2700K	0 No
H² 2015lm/m (49W)	U³ Universal 120 to 277V	B 0-10V to 1%	B Black			30 3000K	
V² 2875lm/m (66W)		D DALI to 1%	G Grey			35 3500K	
		E ELV Dimming	X Custom RAL			40 4000K	
		F DMX					
		G⁴ LUTRON					

Notes:

¹ 150 mm length increments available as a modification.

² Denotes output at 3000K, unless otherwise noted.

³ Not applicable for ELV dimming.

⁴ Hi-lume, Vive, and Athena compatible.

Consult factory for lead-times.

Consult factory for systems using multiple optics and mounting configurations.



Bold Lighting

4710 Ecton Dr., Marietta, GA 30066, USA

info@boldlighting.us www.boldlighting.us t: +1-678-903-4061

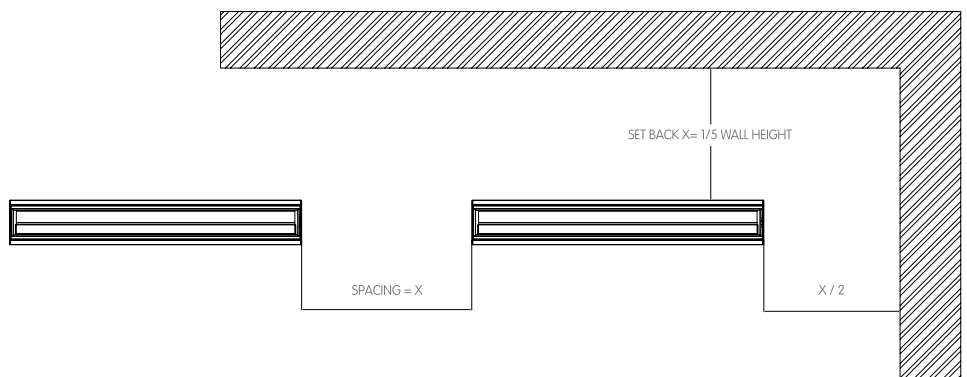
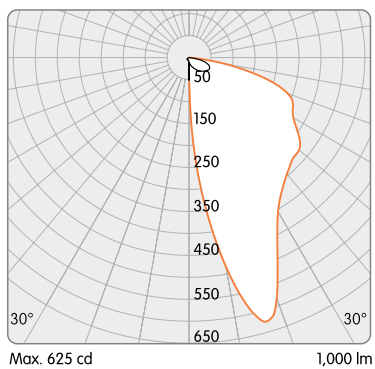
OPTICAL FLEXIBILITY

STEALTH WALLWASHER



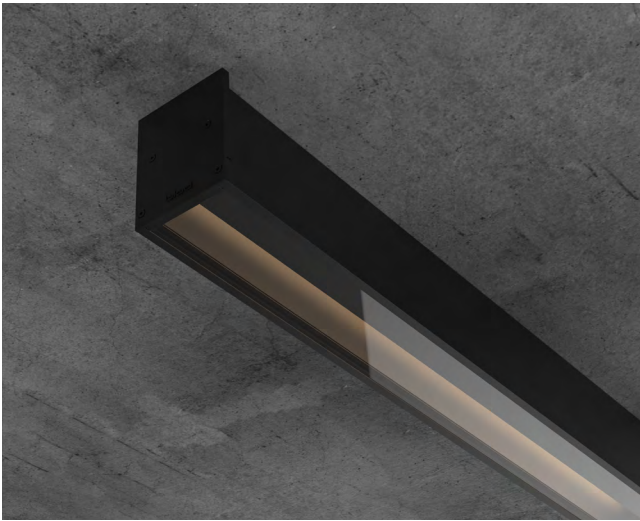
The Stealth Reflector provides even illumination of vertical surfaces with a flexible set back of 1/5 of the wall height and an offset to spacing ratio of 1:1. Stealth's optics are designed to wash large areas where exceptional uniformity and a quiet ceiling is required.

Stealth Reflector

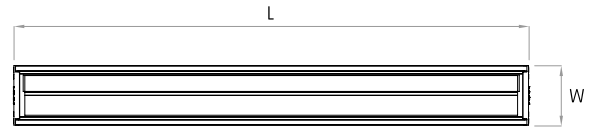
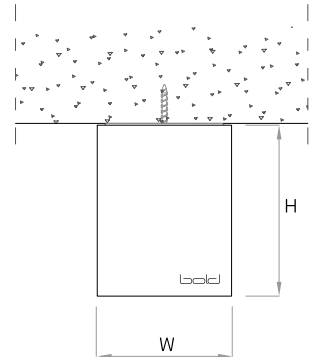


MOUNTING FLEXIBILITY
Per Millimeter

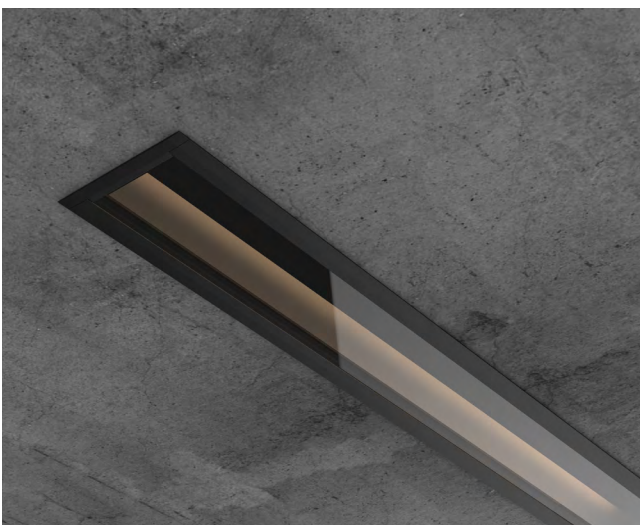
SURFACE MOUNTED

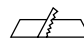


Actual (mm)
L= 622 | 922 | 1222 | 1522 |
Continuous runs
W= 72
H= 91

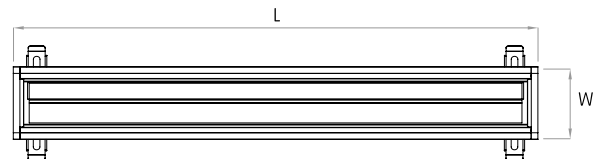
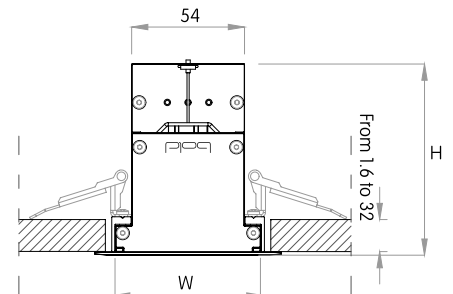


RECESSED WITH TRIM



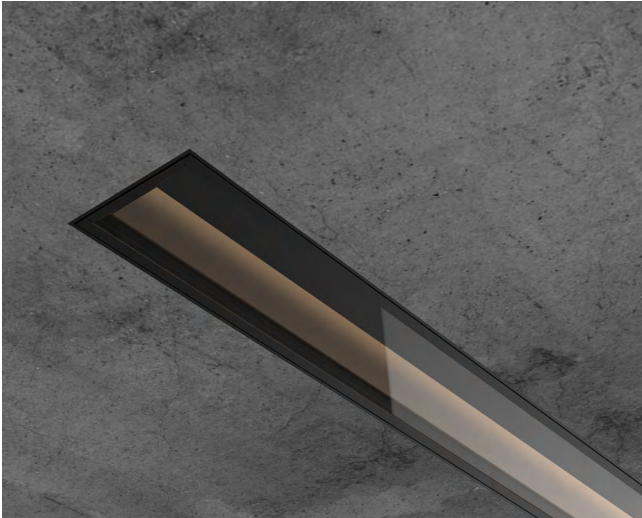
 (L-20 x W-20)


Actual (mm)
L= 334 | 634 | 934 | 1234 |
1534 | Continuous runs
W= 80
H= 91



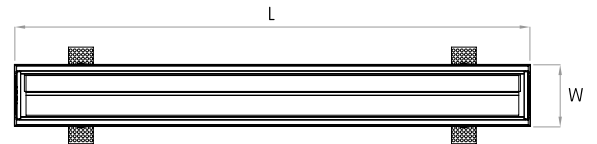
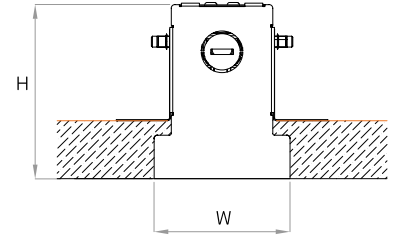
MOUNTING FLEXIBILITY
Per Millimeter

RECESSED TRIMLESS

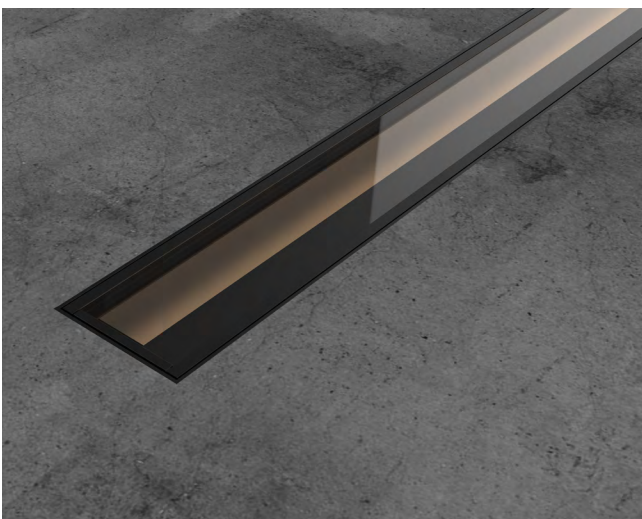


 (L+1.6 x W+1.6)

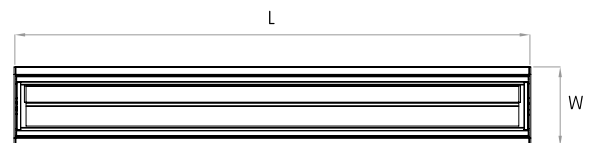
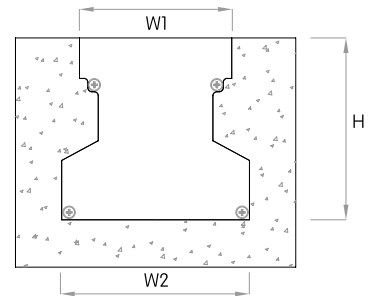
Actual (mm)
L= 624 | 924 | 1224 | 1524 |
Continuous runs
W= 75
H= 97



INGROUND



Actual (mm)
L= 325 | 625 | 925 | 1225 |
1525 | Continuous runs
W1= 77 | W2= 95
H= 92

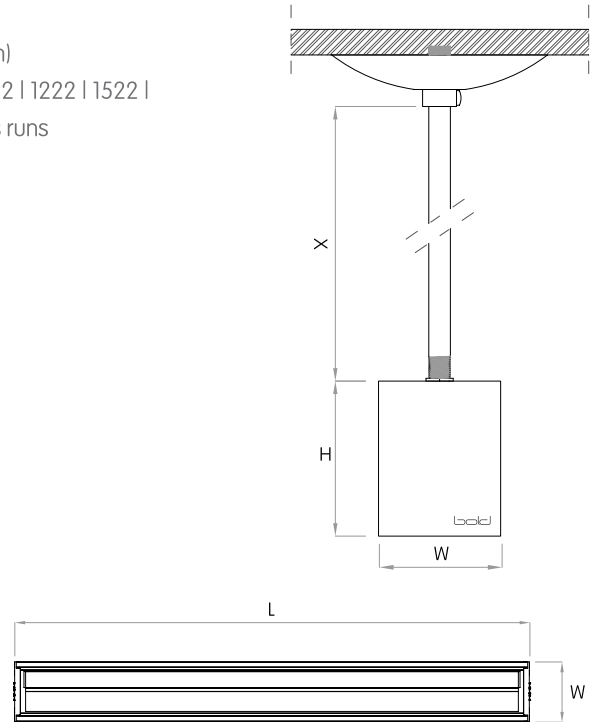


MOUNTING FLEXIBILITY
Per Millimeter

PENDANT



Actual (mm)
L= 622 | 922 | 1222 | 1522 |
Continuous runs
W= 72
H= 91
X= 1500



DELIVERED LUMEN OUTPUT

Per Linear Foot

Output Watts CRI +90

STATIC-WHITE		2700K	3000K	3500K	4000K
M	33W	1475 lm	1535 lm	1595 lm	1645 lm
H	49W	1930 lm	2015 lm	2090 lm	2155 lm
V	66W	2755 lm	2875 lm	2980 lm	3075 lm

DIMENSIONS TABLE

				12"		24"		36"		48"		60"		
		Height		Width		Actual Length								
		mm	inch	mm	inch	mm	inch	mm	inch	mm	inch	mm	inch	
		Surface Mounted	91	3 9/16	72	2 13/16			622	24 1/2	922	36 5/16	1222	48 1/8
Recessed with Trim	91	3 9/16	88	3 7/16	335	13 3/16	634	25	934	36 13/16	1234	48 5/8	1534	60 7/16
Recessed Trimless	97	3 13/16	75	2 15/16			624	24 5/8	924	36 3/8	1224	48 1/4	1524	60
Pendant	91	3 9/16	72	2 13/16			622	24 1/2	922	36 5/16	1222	48 1/8	1522	59 15/16
Inground (with housing)	92	3 5/8	95	3 3/4	325	12 13/16	625	24 5/8	925	36 7/16	1225	48 1/4	1525	60

