

INSTALLATION MANUAL OUTDOOR TRIMLESS CEILING RECESSED

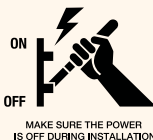
INDEX

- 1: INSTALLATION CONDITIONS
- 2: BRACKETS INSTALLATION
- 3: CABLE & FIXTURE INSTALLATION
- 4: WIRING INSTRUCTIONS
- 5: CONTINUOUS RUN INSTALLATION

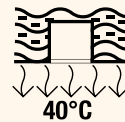


WARNING:

The safety of this fixture is guaranteed only if you comply with these instructions.



IP65

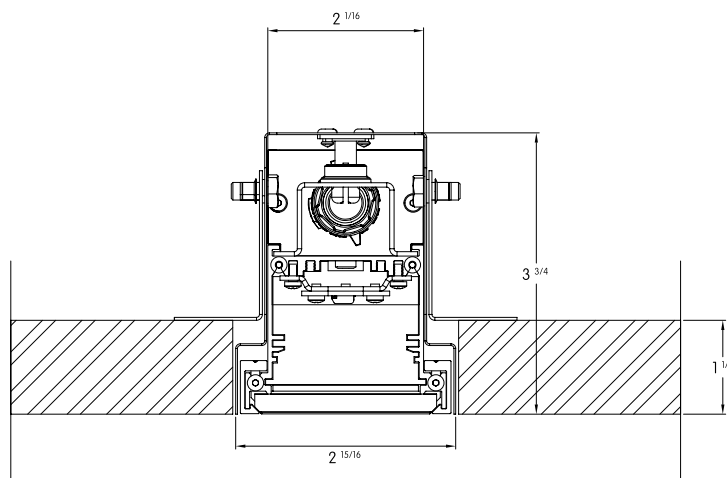
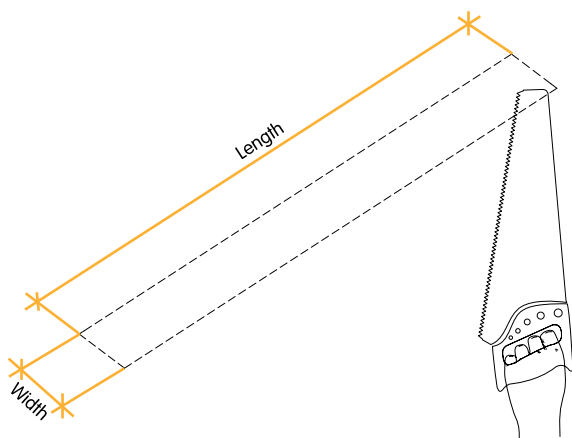


THE LOW SURFACE TEMPERATURE (40°C) IMPOSE NO LIMITS ON INSTALLATION



1. INSTALLATION CONDITIONS

1. ► Cut ceiling opening.



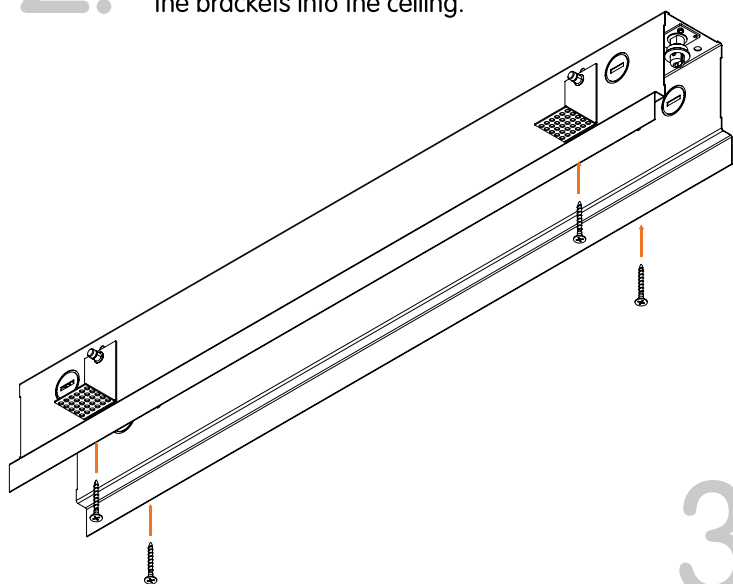
Prepare the ceiling conditions according to the dimension table

Profile Sizes (mm)				Profile Sizes (ft)			
Profile Exact Dimensions (mm)				Profile Exact Dimensions (ft)			
Length	Width	Depth		Length	Width	Depth	
300	N/A	N/A	N/A	1	N/A	N/A	N/A
450	474	75	96	1 1/2	1ft 6 11/16 in	0ft 2 15/16 in	0ft 3 3/4 in
600	624	75	96	2	2ft 9/16 in	0ft 2 15/16 in	0ft 3 3/4 in
750	774	75	96	2 1/2	2ft 6 1/2 in	0ft 2 15/16 in	0ft 3 3/4 in
900	924	75	96	3	3ft 3/8 in	0ft 2 15/16 in	0ft 3 3/4 in
1050	1074	75	96	3 1/2	3ft 6 5/16 in	0ft 2 15/16 in	0ft 3 3/4 in
1200	1224	75	96	4	4ft 3/16 in	0ft 2 15/16 in	0ft 3 3/4 in
1350	1374	75	96	4 1/2	4ft 6 1/8 in	0ft 2 15/16 in	0ft 3 3/4 in
1500	1524	75	96	5	5ft	0ft 2 15/16 in	0ft 3 3/4 in

2. BRACKETS INSTALLATION

2.

- ▶ Insert the main electrical cable into the profile.
- ▶ Fix the fixture into its specified place screwing the brackets into the ceiling.



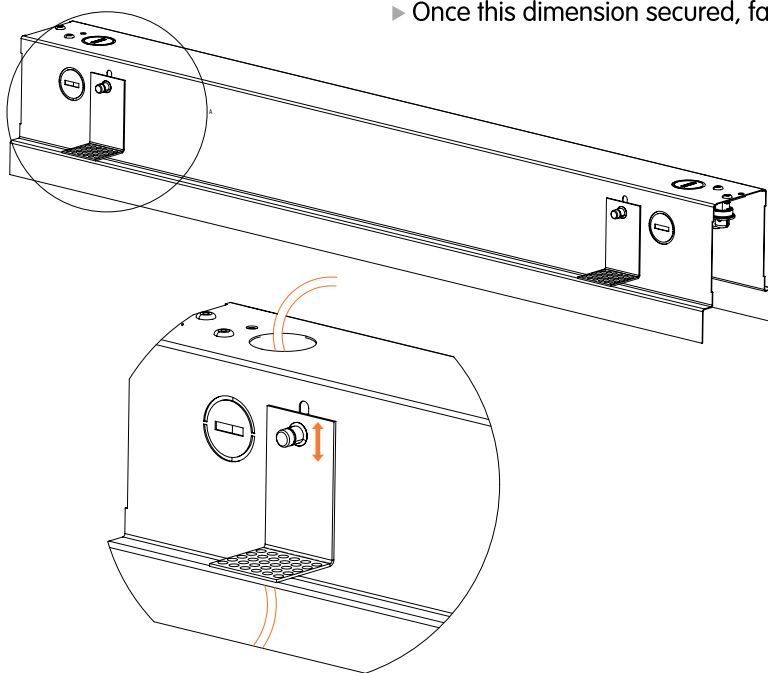
WARNING: Shock hazard. Serious injury or death may occur.



Turn Off power before servicing or installing. Wire according to local and national codes. This product shall be installed by a qualified electrician.

3.

- ▶ Make sure that your profile is flush with the lower face of the ceiling.
- ▶ To do so, loosen the bracket screws "step 1" and adjust the height accordingly "step 2".
- ▶ Once this dimension secured, fasten the bracket screws.

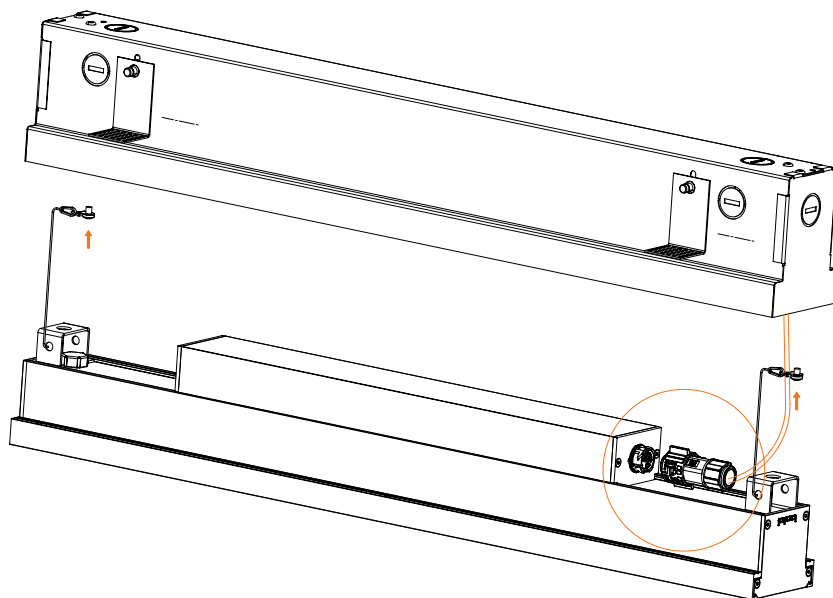


WARNING: Failure to secure safety cables can lead to injury or death!

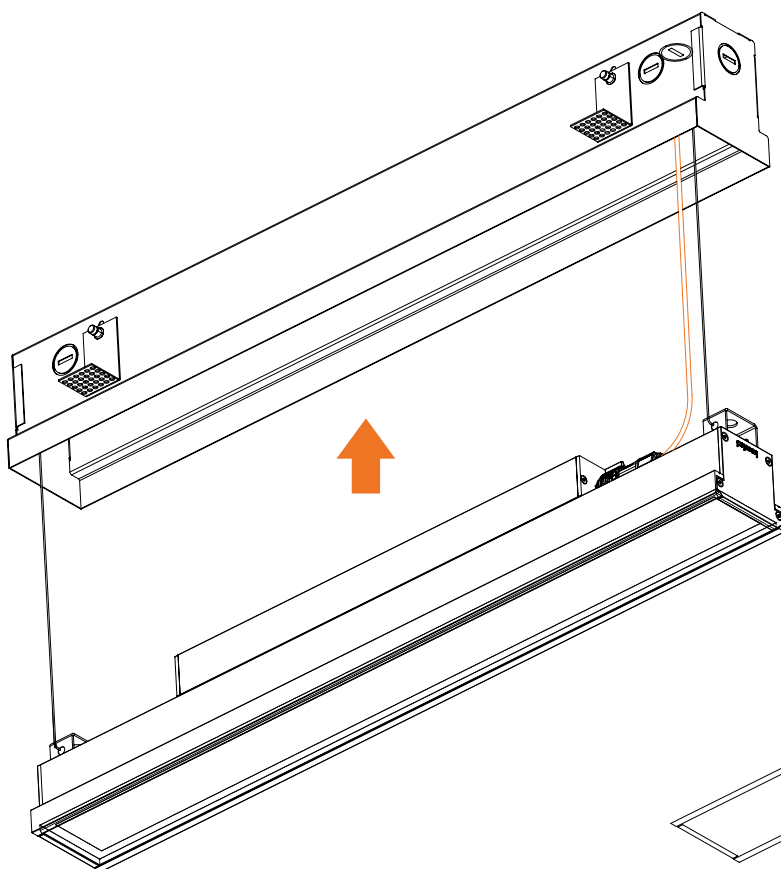
3. CABLE AND FIXTURE INSTALLATION

- Safety Cable is well fixed by its screws to the housing profile.
- Connect Feed-in Connector to Leader Feed-in Cable as per the instructions provided on page 4.
- Provide power and test connections.
- See Wiring Details on pages 3 & 4 for reference.

Once the electrical connections have been tested, secure conduits and couplers tightly.



- Insert profile into position and make sure the push pin bracket make a "click" noise indicating that they are secure in the supporting bracket slots.

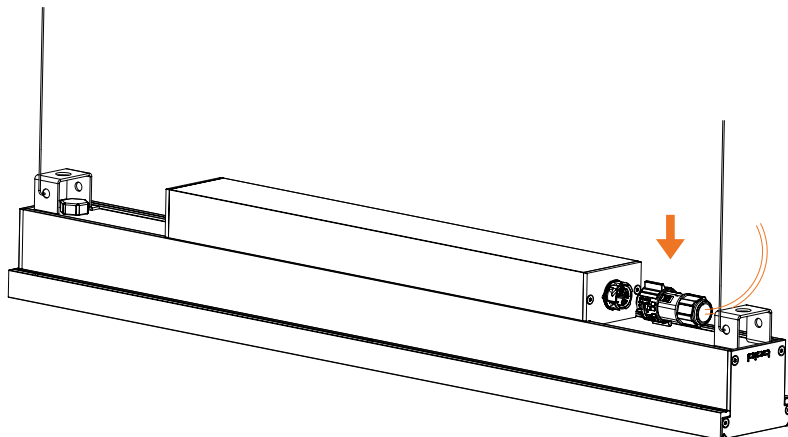


- Make sure the profile face is sitting flush and leveled with the face of the ceiling.

4. WIRING INSTRUCTIONS

- ▶ Refer to the last page for wiring instructions.
- ▶ Follow carefully wiring diagram for various dimming protocols.
- ▶ Before beginning the wiring process, double check the type of connection specified.

T1 Type fixture only have an input, and cannot be used for daisy chained fixtures.



Wiring Color Codes

	Ground	Line	Neutral	Dimmed Line	0-10V +	0-10V -	Dali +	Dali -
UL System	Green	Black	White	Orange	Red	Grey	Red	Orange
CE System	Yellow/Green	Brown	Blue	N/A	Red	Black	Red	Black

Wiring Instructions for continuous runs (Daisy Chained Fixtures)

Max daisy chain length (A minimum of 18 AWG or 0.752 mm is required)

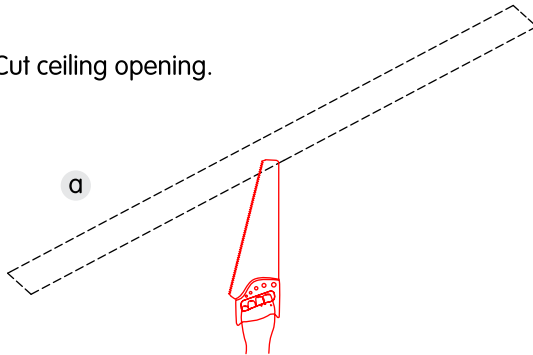
System	Voltage	"L" Output	"S" Output	"H" Output	"W" & "T" Outputs
UL	120VAC - 60 Hz	100 ft.	50 ft.	36 ft.	50 ft.
	277VAC - 60 Hz	200 ft.	100 ft.	70 ft.	100 ft.
CE	240VAC - 50/60 Hz	45m	23m	17m	23m



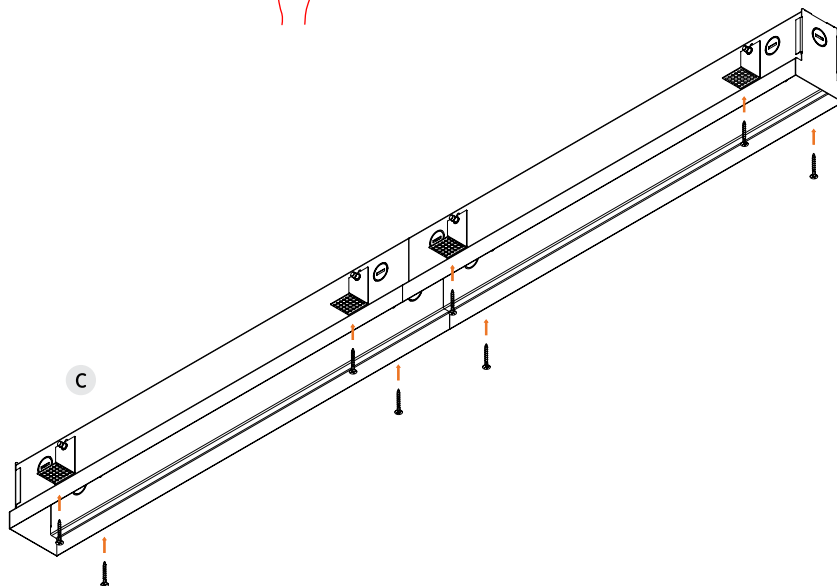
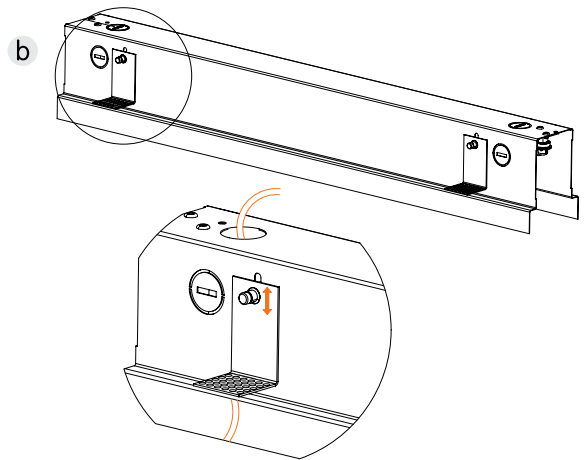
WARNING: Do not exceed the rated wattage of the through wiring cables or the connectors.
For all continuous runs, refer to factory shop drawing indicating exact dimensions and feed locations.

5. CONTINUOUS RUN INSTALLATION

- Cut ceiling opening.

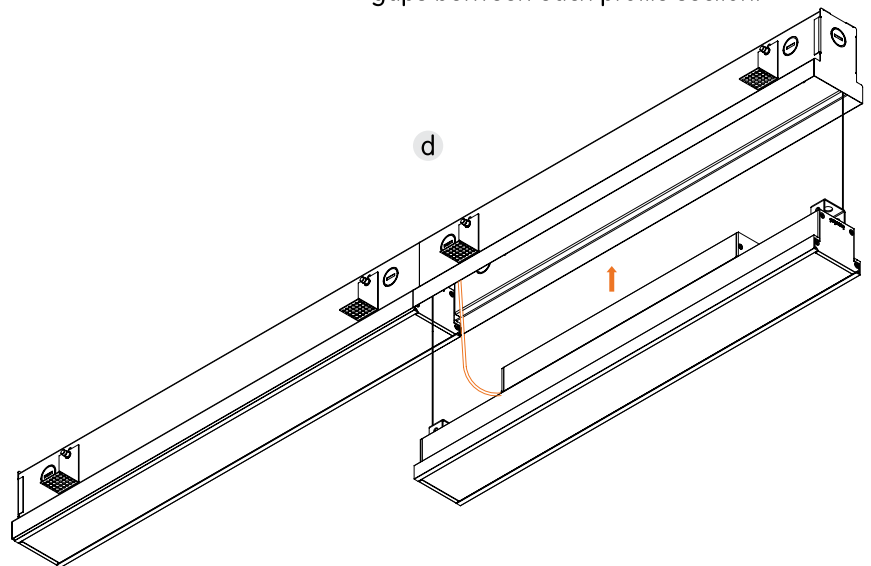


- Install first of run according to steps 2-6 from single unit sheet.



- Once all suspension rods and brackets are in place, insert one section of profile after the other, making sure there is no gaps between each profile section.

- Continue installation as a continuous run. Consult factory shop drawings for all continuous runs for indications of spacing and electric feeds locations.



- For through wiring, make the electrical connection using the connector of the preceding luminaire. Please refer to the electrical layout plan to locate main feeds.

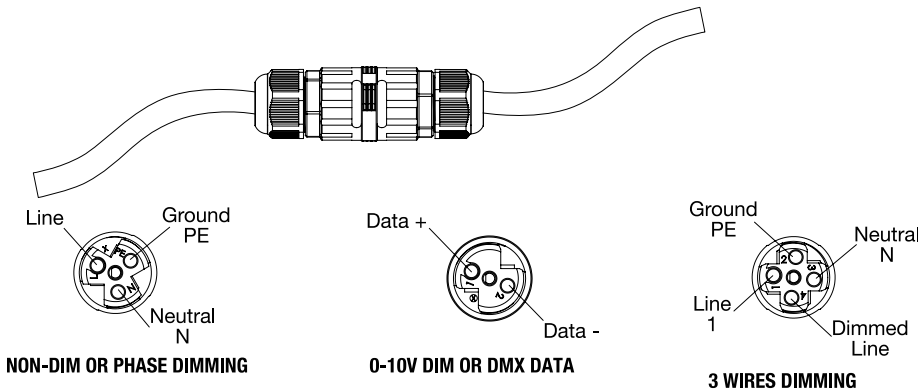


WARNING: Do not exceed the rated wattage of the through wiring cables or the connectors.
For all continuous runs, refer to factory shop drawing indicating exact dimensions and feed locations.

LINE-TO-LINE CONNECTOR:

When Provided with Line-to-Line Connectors, fixtures will be Type 2 (Daisy chained) as show on page 3 and will have an Input cable and an Output cable with specific length. These Cables shall be connected and terminated On-site.

Line-to-Line Connectors will have a separate instruction manual included in the fixture's packaging, giving detailed instructions on how to connect the leads properly. This step requires following the below wire labeling closely to prevent any damage to the fixtures.



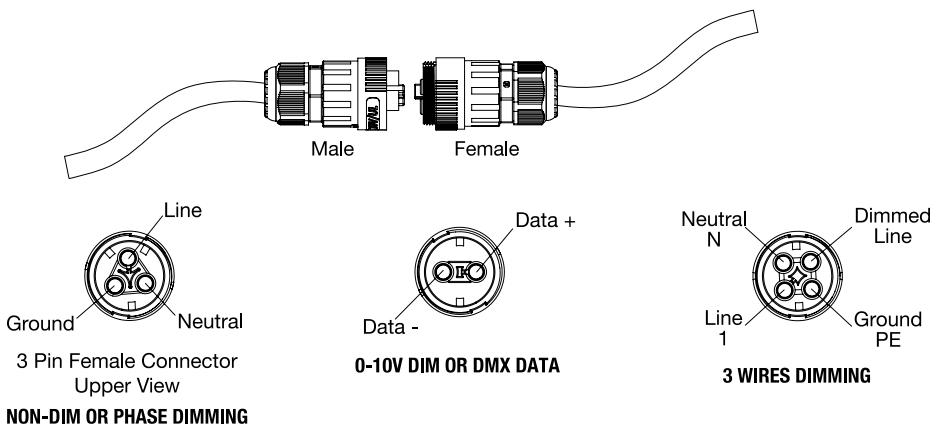
Warning: Failure to follow the wiring color coding and connectors pin labeling will void the fixtures warranty.

Warning: For 0-10v dimming, the fixture are provided with two (2) cable leads, one with a 3 pin connector for power and the other with 2 pins connector for dimming wires. follow below connector labeling for termination of wires.

MALE / FEMALE

When fixtures are ordered for continuous runs, (Daisy Chained), fixtures will be provided with MALE / FEMALE Connectors.

Connectors are factory installed on Input and Output cables leads.



Warning: Failure to follow the wiring color coding and connectors pin labeling will void the fixtures warranty.

WARNING: The connectors pins labeling can be found inside connector, embossed on the wire terminals. Always double check factory wiring order before connecting terminating the cables on-site.