

INSTALLATION MANUAL INDOOR RECESSED WITH TRIM - INTEGRAL DRIVER

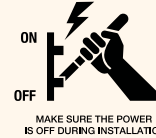
INDEX

- A:** SINGLE UNIT INSTALLATION
- B:** CONTINUOUS INSTALLATION
- C:** WIRING DETAILS

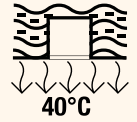


WARNING:

The safety and warranty of this fixture is guaranteed only if installed in compliance with below instruction manual.

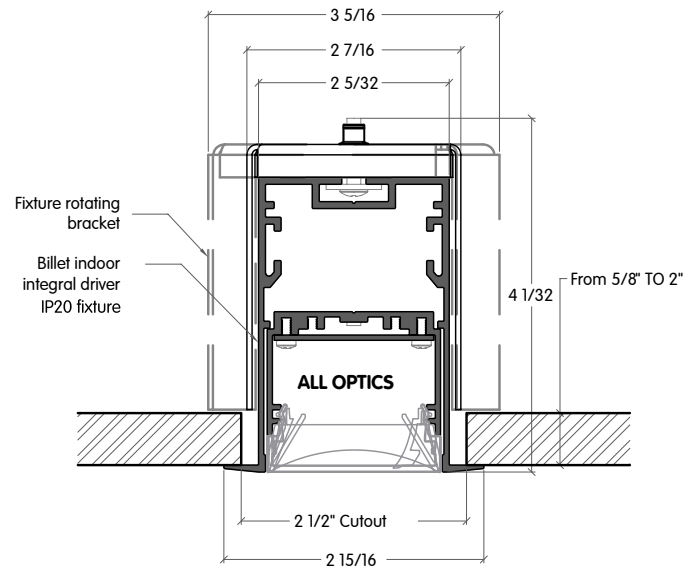
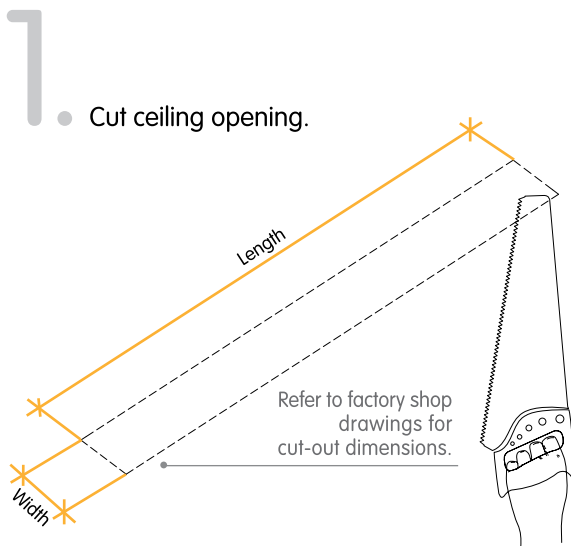


IP20



THE LOW SURFACE TEMPERATURE (40°C) IMPOSE NO LIMITS ON INSTALLATION

A. SINGLE UNIT INSTALLATION



Prepare the ceiling conditions according to the factory shop drawings.

		12"						24"		36"		48"		60"	
		Height		Width		Actual Length		Actual Length		Actual Length		Actual Length		Actual Length	
		mm	inch	mm	inch	mm	inch	mm	inch	mm	inch	mm	inch	mm	inch
Wallgrazer	Recessed with Trim	85	3 3/8	75	3	328	12 15/16	625	24 5/8	925	36 7/16	1228	48 3/8	1528	60 3/16
Symmetrical Baffles	Recessed with Trim	85	3 3/8	75	3	328	12 15/16	625	24 5/8	925	36 7/16	1228	48 3/8	1528	60 3/16
Honeycomb	Recessed with Trim	85	3 3/8	75	3	328	12 15/16	625	24 5/8	925	36 7/16	1228	48 3/8	1528	60 3/16
Opal	Recessed with Trim	85	3 3/8	75	3	328	12 15/16	625	24 5/8	925	36 7/16	1228	48 3/8	1528	60 3/16

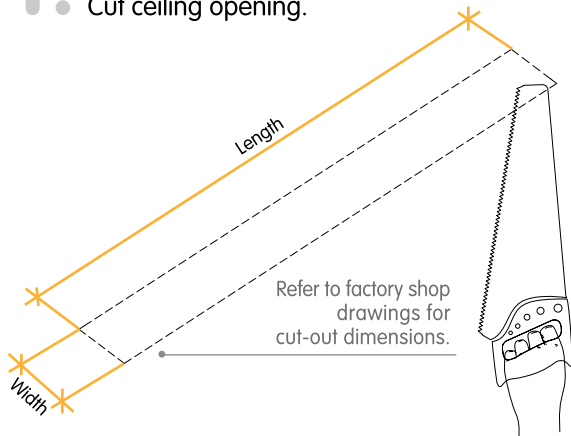
BILLET

INDOOR RECESSED WITH TRIM - INTEGRAL DRIVER

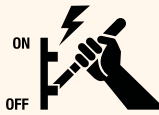
bold
lighting

1.

- Cut ceiling opening.

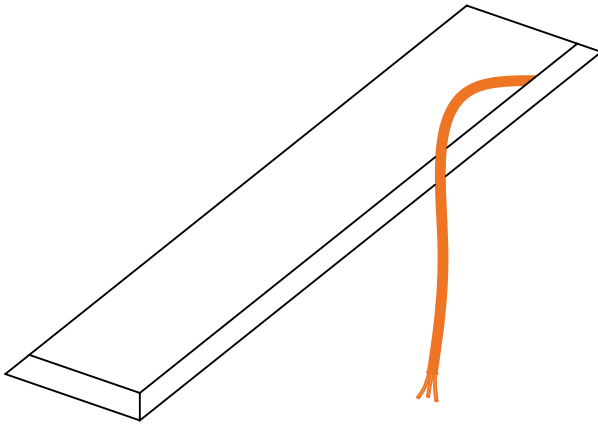


WARNING: Shock hazard. Serious injury or death may occur. Turn Off power before servicing or installing. Wire according to local and national codes. This product shall be installed by a qualified electrician.



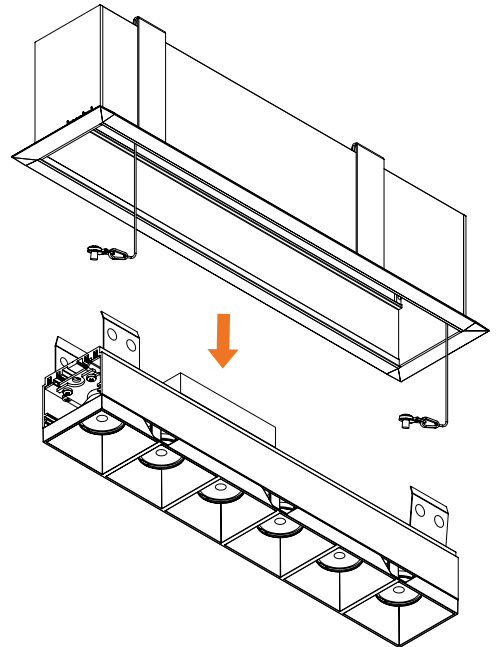
2.

- ▶ Drop down electrical wire.



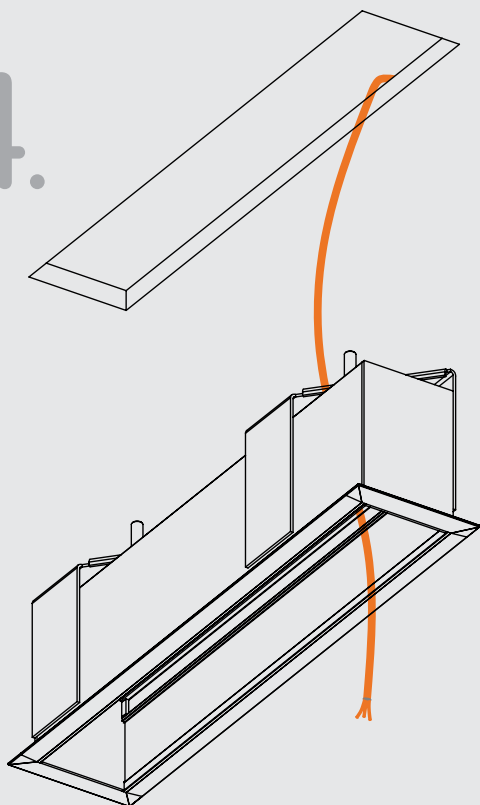
3.

- ▶ Unclip reflector assembly from main profile.
- ▶ Remove safety cables.



WARNING: Failure to secure safety cables can lead to injury or death!

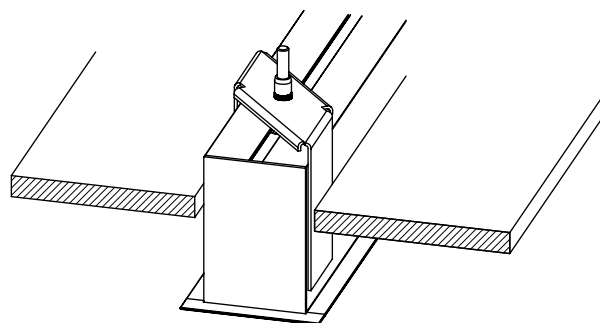
4.



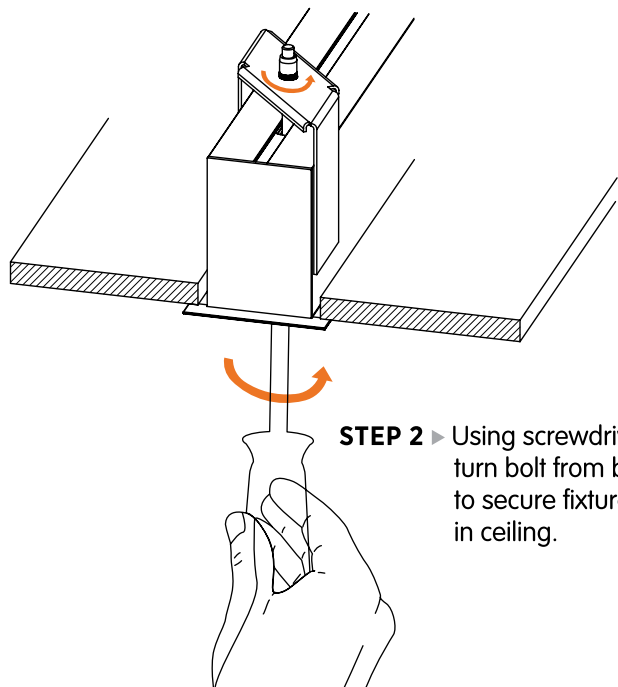
► Insert main cable into the profile.

METHODS A & B

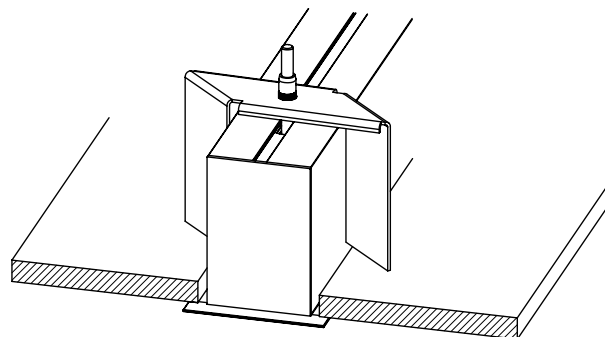
METHOD A : USING ROTATING CROSSBARS



STEP 1 ► Lift profile into ceiling opening.



STEP 2 ► Using screwdriver, turn bolt from below to secure fixture in ceiling.

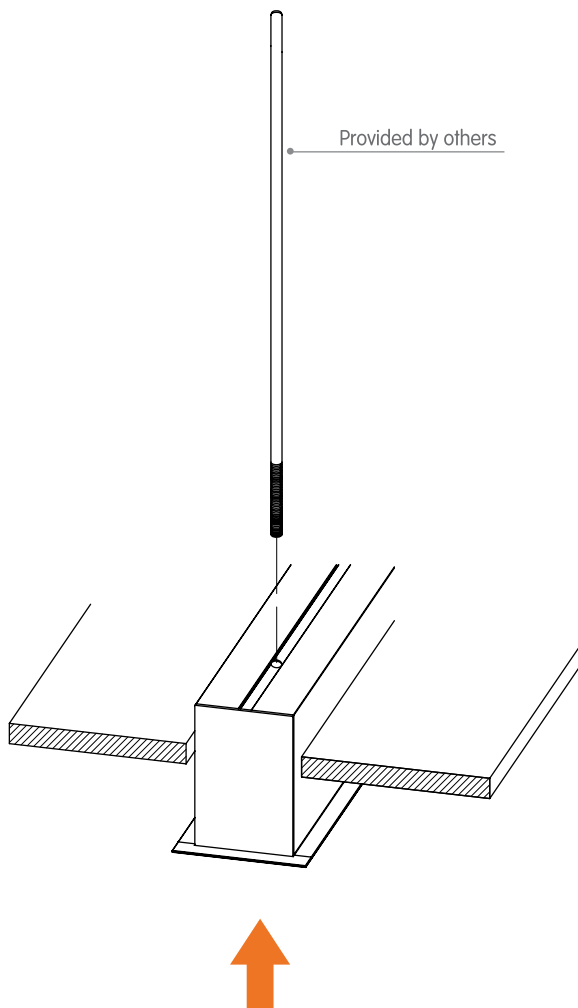


STEP 3 ► Tighten the bolt until trim sits tightly against ceiling plane.

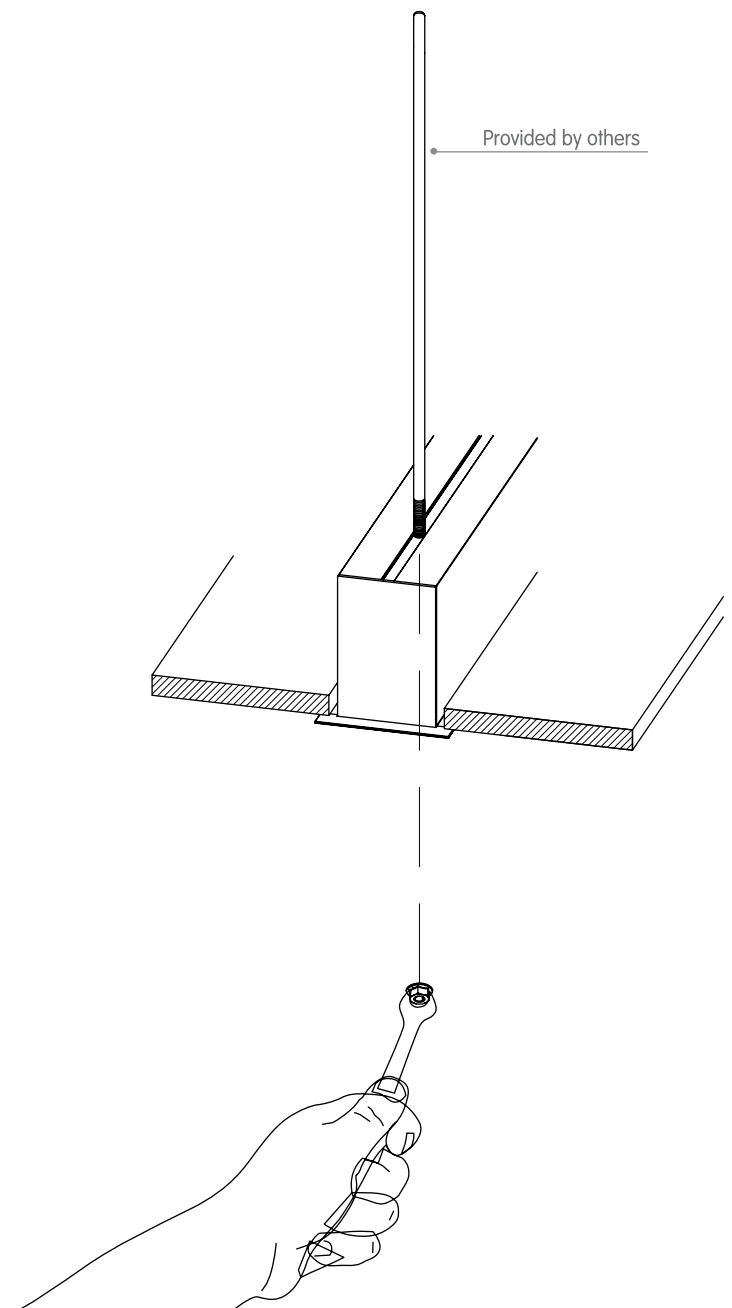
4.

METHOD B : USING THREADED RODS

STEP 1 ▶ Lift profile making sure threaded rods are inserted through profile holes.

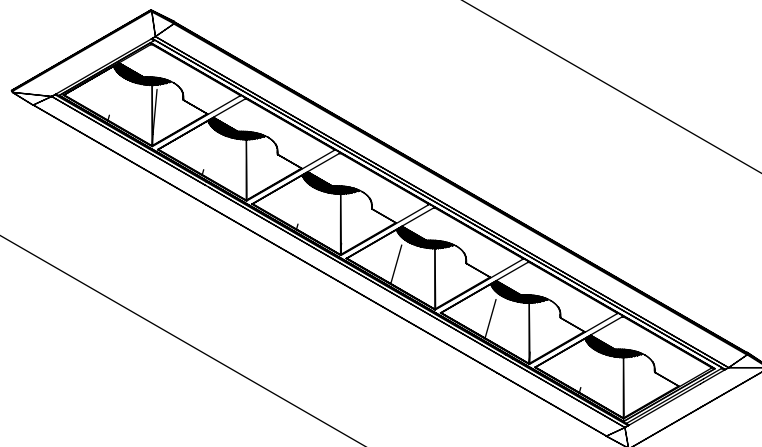
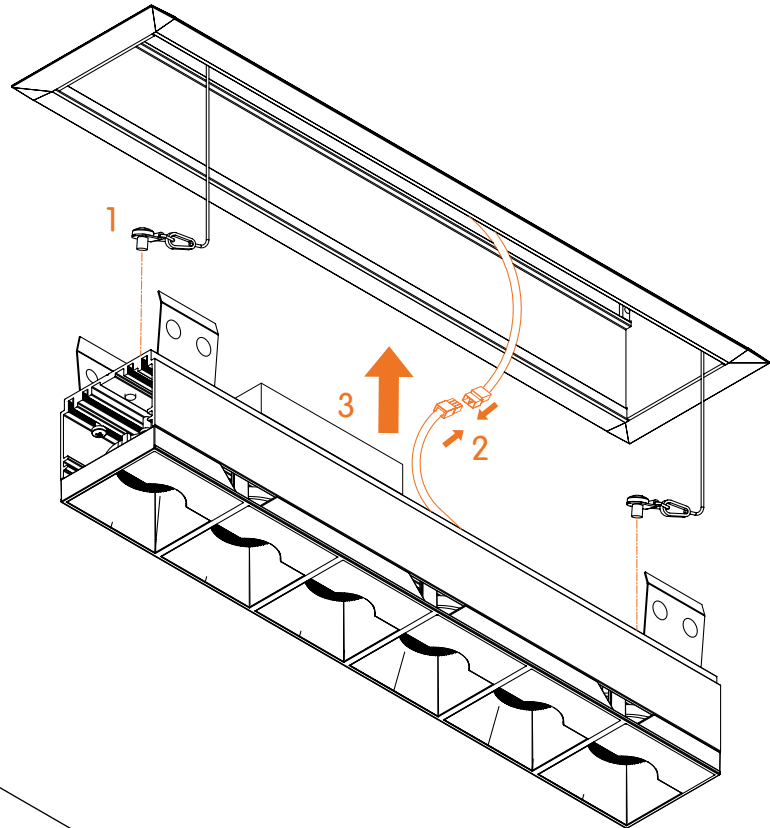


STEP 2 ▶ Tighten nuts on threaded rods until the trim sits tightly against ceiling plane.



5.

- ▶ Re-attach safety cables.
- ▶ Connect the low voltage quick connects from the driver.
- ▶ Insert the reflector assembly into the main profile until it clicks.



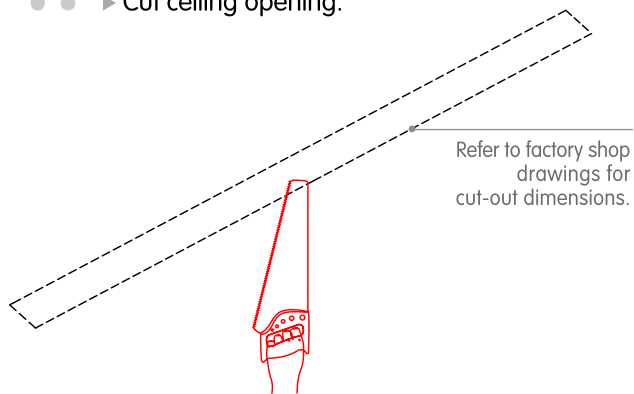
CLICK 



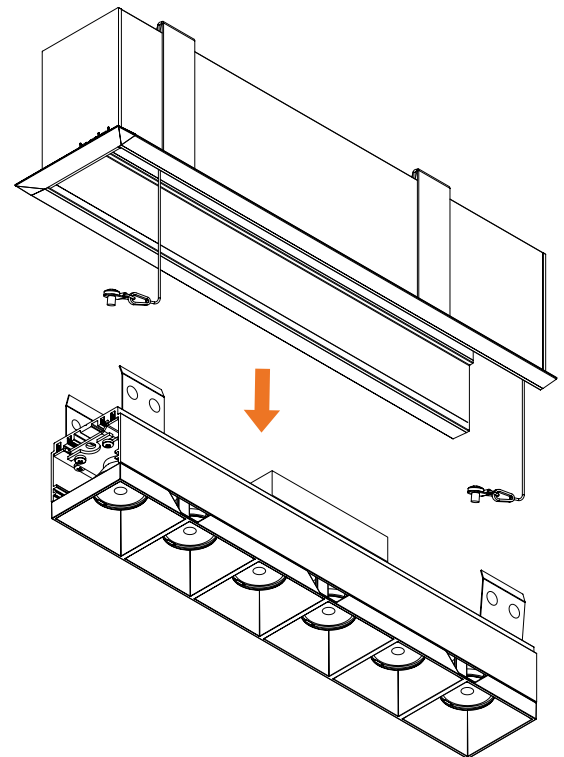
WARNING: Fixture reflector assembly shall not be installed into profile until ceiling is painted and completely finished.

B. CONTINUOUS RUN INSTALLATION

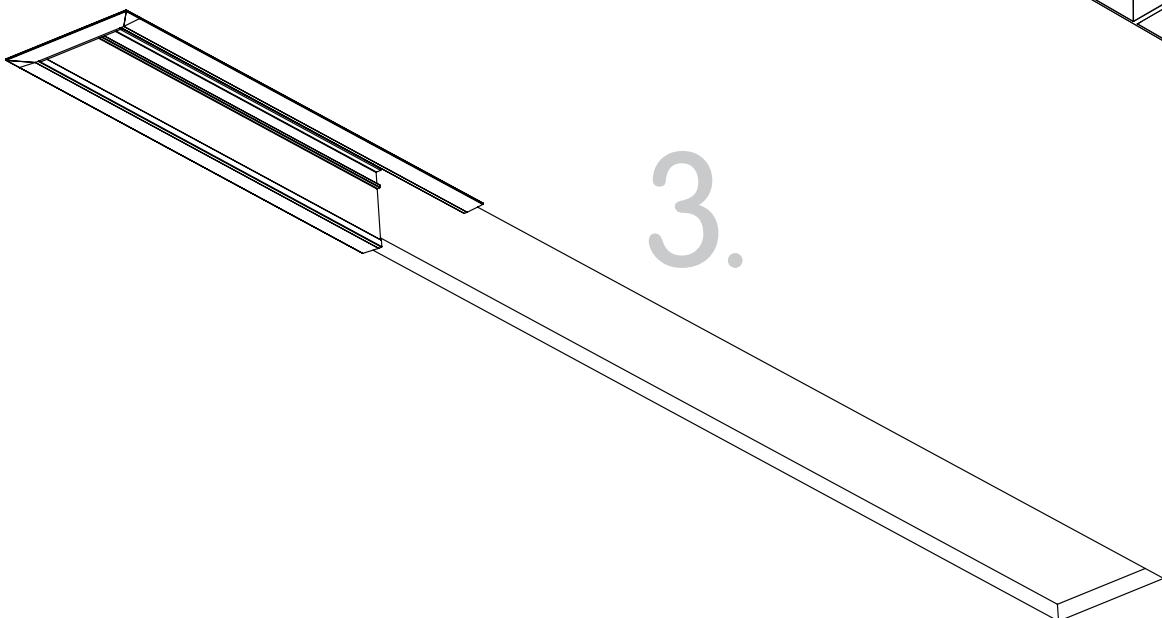
1. ▶ Cut ceiling opening.



2. ▶ Unclip reflector assembly from main profiles.
▶ Remove safety cables.



3.

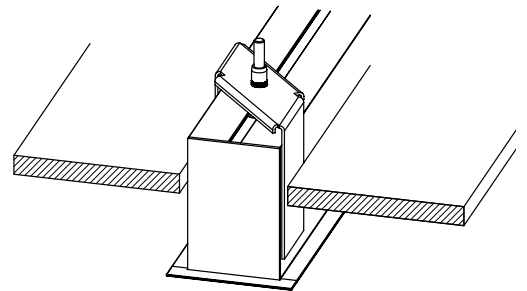


4.

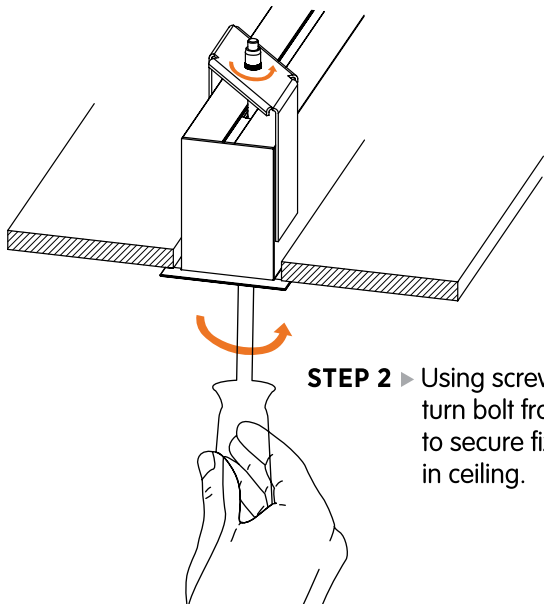
► Lift middle / end of run into ceiling opening.

METHODS A & B

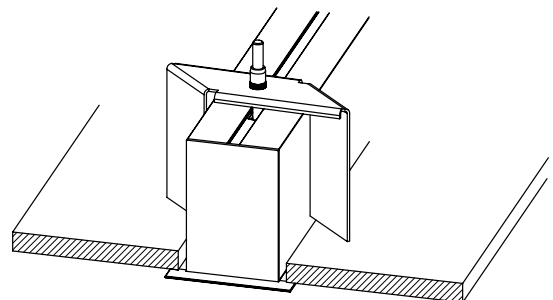
METHOD A : USING ROTATING CROSSBARS



STEP 1 ► Lift profile into ceiling opening.



STEP 2 ► Using screwdriver, turn bolt from below to secure fixture in ceiling.

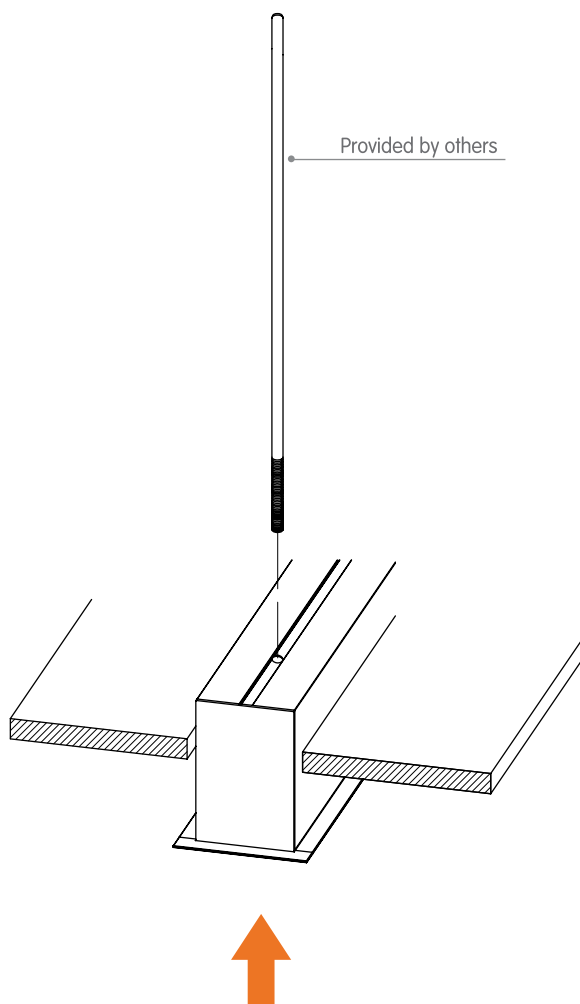


STEP 3 ► Tighten the bolt until trim sits tightly against ceiling plane.

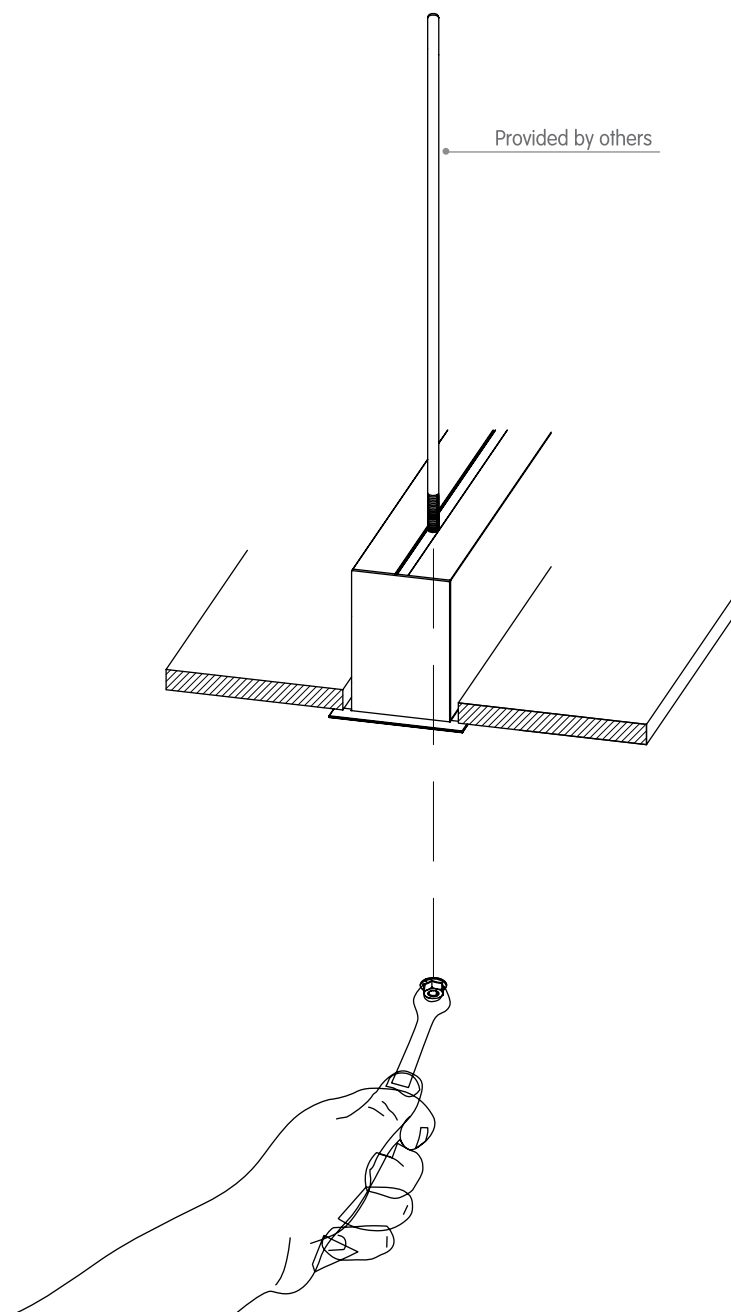
4.

METHOD B : USING THREADED RODS

STEP 1 ▶ Lift profile making sure threaded rods are inserted through profile holes.

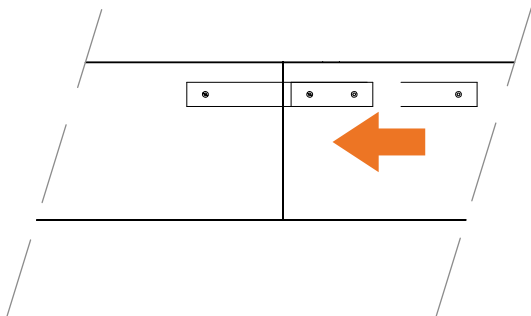


STEP 2 ▶ Tighten nuts on threaded rods until the trim sits tightly against ceiling plane.



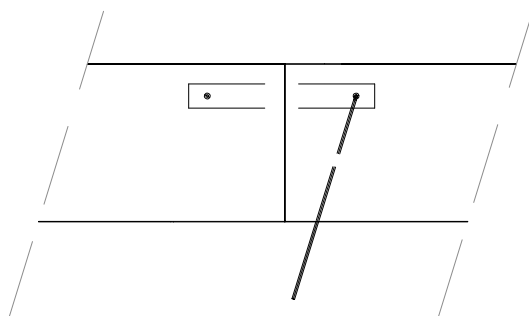
5.

- Slide the alignment bracket halfway into the neighboring profile.

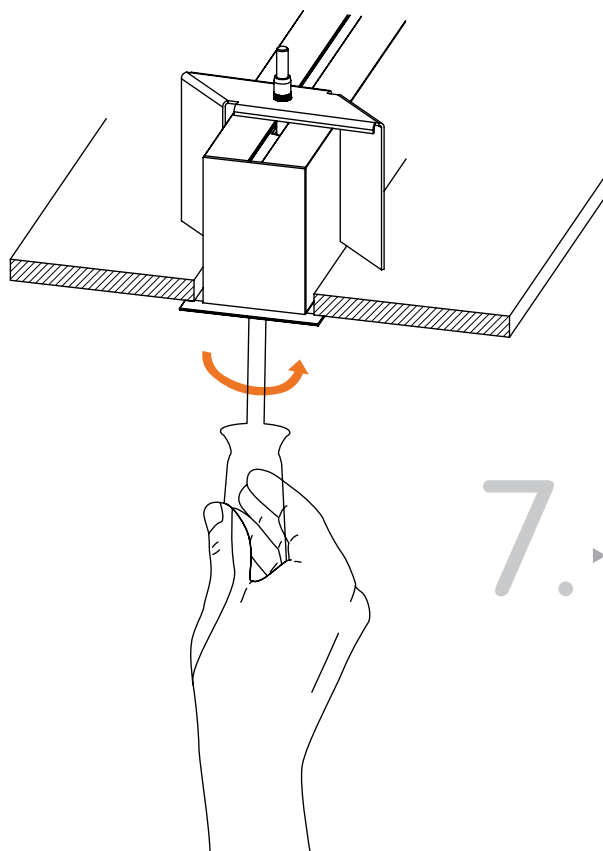
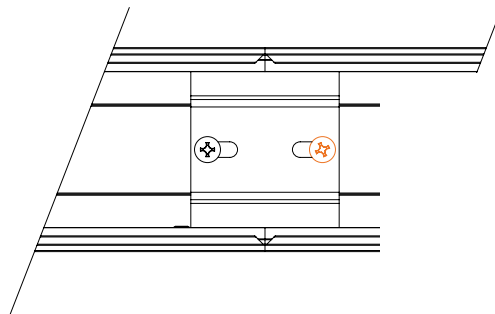


6.

- Tighten the alignment bracket using the allen key and provided headless screws.



- Tighten the screws of the second alignment bracket.

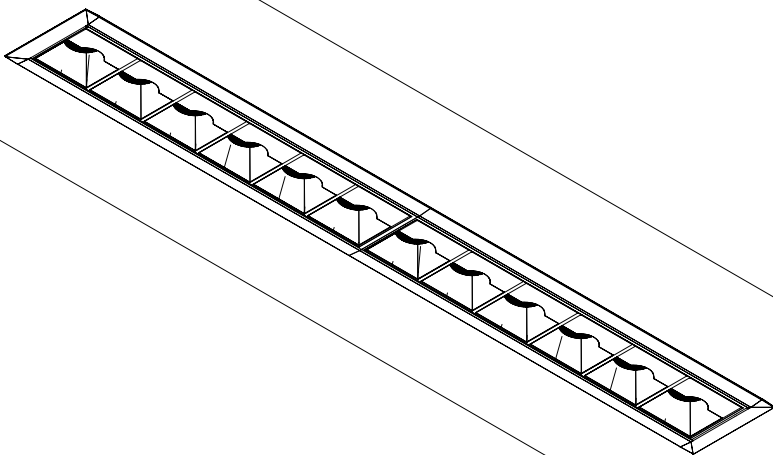
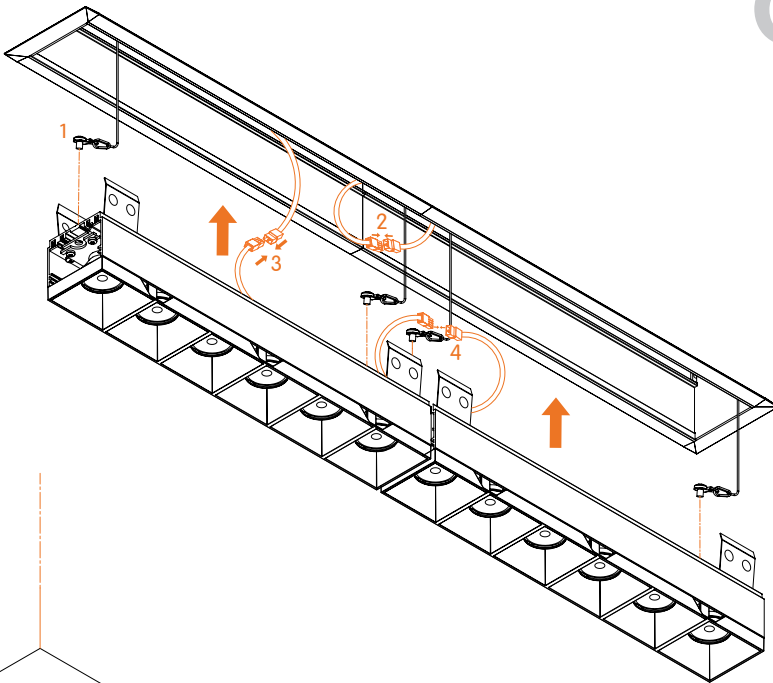


7.

- Using screwdriver, turn bolt from below to secure fixture in ceiling. Tighten the bolt until trim sits tightly against ceiling plane.

8.

- ▶ 1- Re-attach safety cables.
- ▶ 2- Connect the mains voltage through wiring cables as shown on pages 11-13.
- ▶ 3- Connect the low voltages quick connects from the driver.
- ▶ 4- Interconnect led modules together using the low voltage quick-connects.
- ▶ Refer to the factory shop drawings for final run lengths.
- ▶ 5- Insert reflector assembly into main profile until it clicks.



CLICK

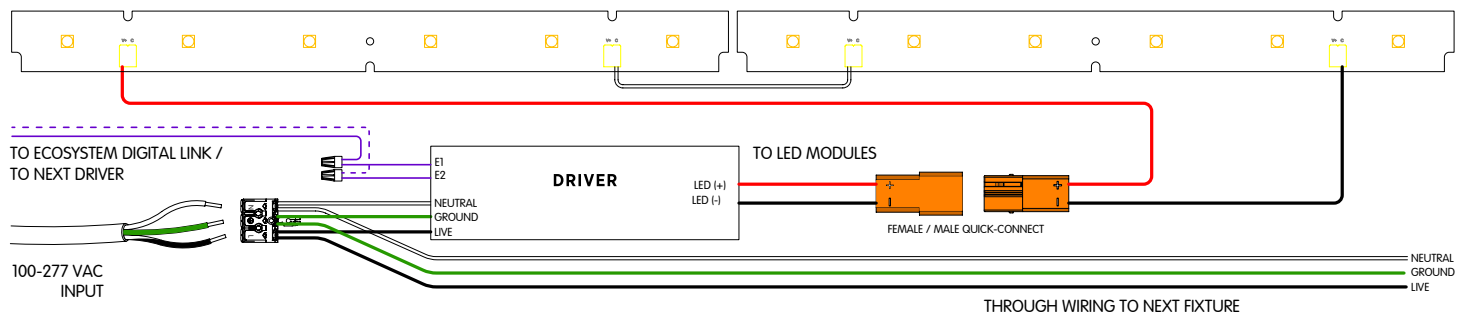


WARNING: Do not exceed the rated wattage of the through wiring cables or the connectors.
For all continuous runs, refer to factory shop drawing indicating exact dimensions and feed locations.

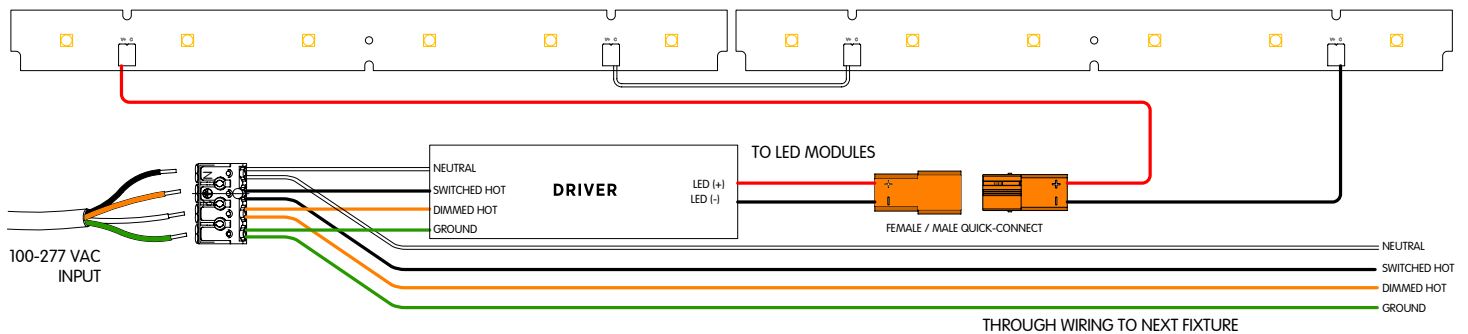
C. WIRING DETAILS

► Monochromatic White

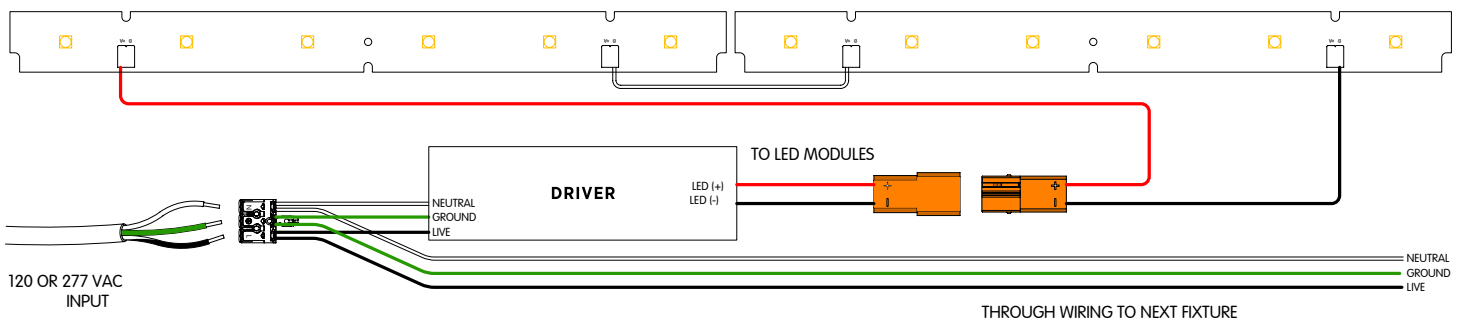
LUTRON ECOSYSTEM WIRING DIAGRAM



LUTRON 3 WIRE WIRING DIAGRAM

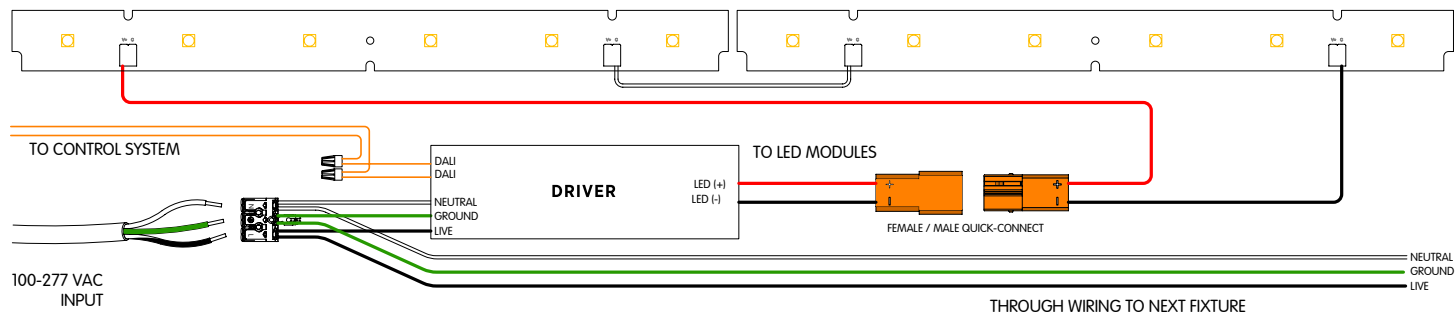


ELV / LUTRON 2 WIRE DIM / NON DIM WIRING DIAGRAM

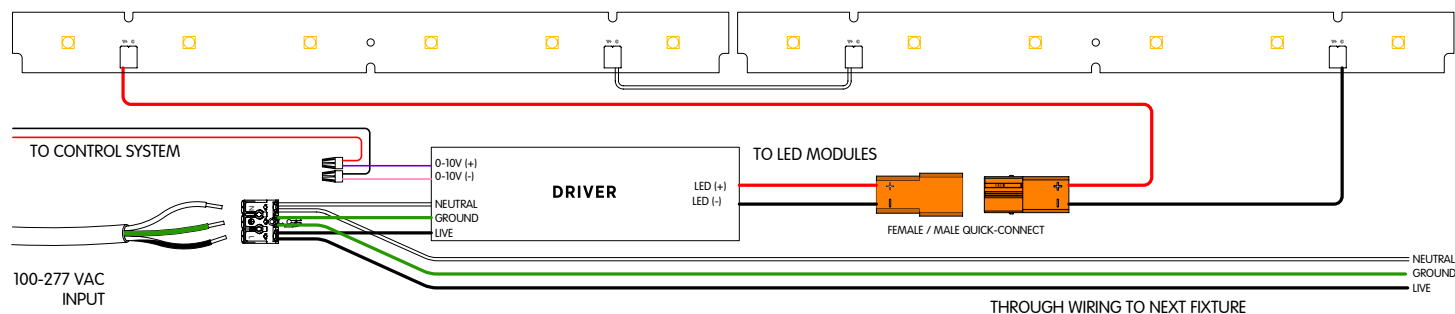


► Monochromatic White

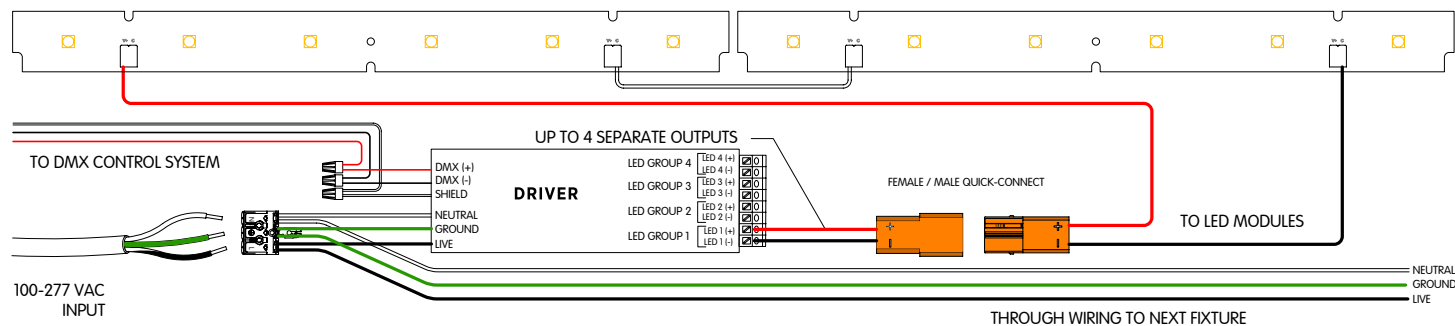
DALI WIRING DIAGRAM



0-10V WIRING DIAGRAM

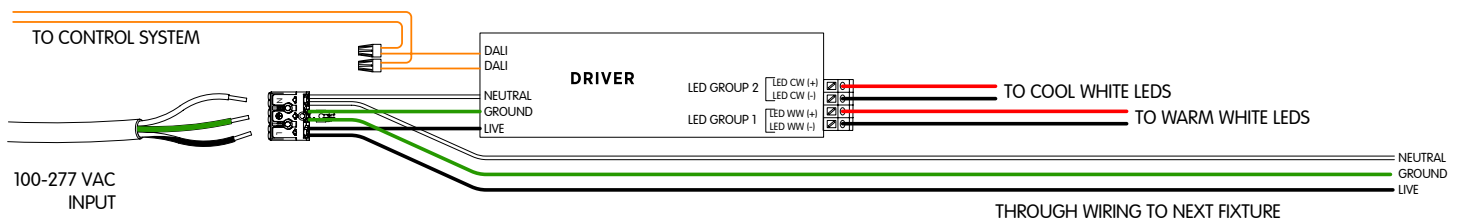


DMX WIRING DIAGRAM

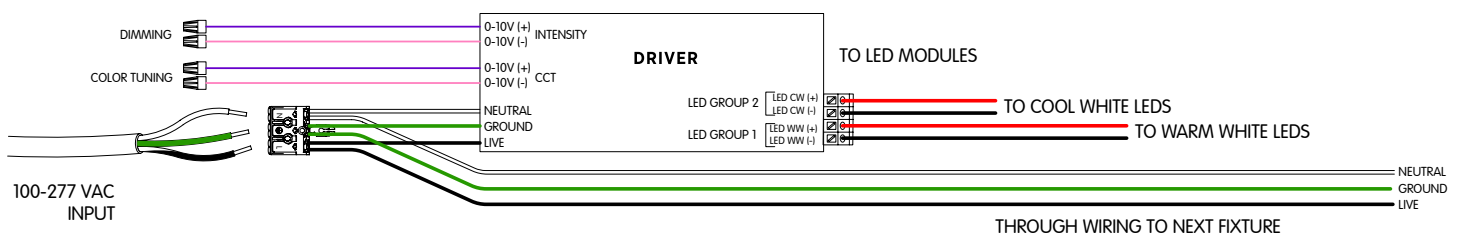


► Tunable White

2 CHANNELS DALI WIRING DIAGRAM



2 CHANNELS 0-10V WIRING DIAGRAM



Failure to follow the wiring color coding and connectors pin labeling will void the fixtures warranty.